



FORETT

AT BUKIT TIMAH

LOVE NATURE. LIVE FREEHOLD.



THE ALLURE OF NATURE



Bukit Timah. A district that can instantly conjure up images of greenery, privacy, premium and privilege. It's where you'd find a 163-ha Nature Reserve including, Singapore's highest hiking trail, Bukit Timah Hill. It is where you'd find the most selective of Singaporeans and expatriates retiring to serenity every night. And it is where you'd find the choicest of home addresses - like Forett.



THE APPEAL
OF FREEHOLD

FORETT
AT BUKIT TIMAH



Artist's Impression

CLOSE TO HEART

CLOSE TO HOME

LEGEND



EDUCATION

- Primary Schools (Within 1km)**
 Pei Hwa Presbyterian Primary School
 Bukit Timah Primary School
- Primary Schools (Within 1-2km)**
 Methodist Girls' School
 Keming Primary School
 Bukit View Primary School
- Secondary & Tertiary Schools**
 Methodist Girls' School
 Nanyang Girls' High School
 NUS High School
 National Junior College
 Hwa Chong Institution & Junior College
 Singapore Polytechnic
 Ngee Ann Polytechnic
 National University of Singapore
 Singapore University of Social Sciences

International Schools

- Dimensions International College
 German European School
 Singapore Korean International School
 Hollandse School
 Chatsworth International School
 Swiss School in Singapore



RECREATION

- Bukit Timah Nature Reserve
 Bukit Batok Nature Park
 Rifle Range Nature Park
 Rail Corridor
 Bukit Batok Town Park (Little Guilin)
 MacRitchie Reservoir
 Singapore Botanic Gardens
 Bukit Timah Railway Station
 Old Bukit Timah Fire Station
 Bukit Batok WWII Memorial
 Former Ford Factory
 Temasek Club
 The British Club
 Swiss Club
 Singapore Island Country Club
 Raffles Town Club



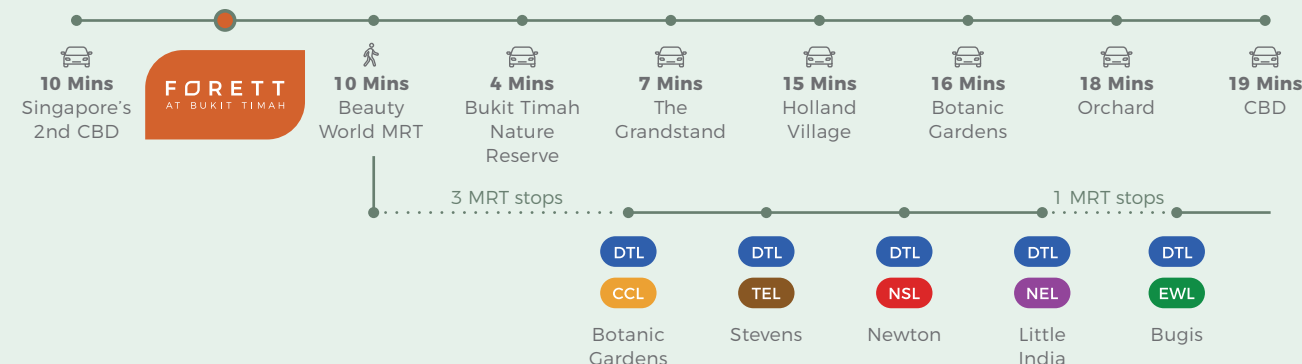
HEALTHCARE

- Ng Teng Fong General Hospital
 Jurong Community Hospital
 Raffles Holland V
 Gleneagles Hospital



SHOPPING / F&B

- Beauty World Plaza
 Beauty World Centre
 Bukit Timah Shopping Centre
 The Grandstand
 The Rail Mall
 Coronation Shopping Plaza
 The Star Vista
 The Clementi Mall
 Westmall
 IMM
 JEM
 Westgate
 JCube
 Bukit Timah Food Centre
 Holland Village
 Dempsey Hill



All traveling times are approximates only and taken from Forett At Bukit Timah to respective destinations.



Map not drawn to scale

A scenic driveway lined with trees and hedges, with a yellow sports car in the distance. The scene is bathed in warm, golden light, suggesting a sunrise or sunset. The driveway is paved with dark asphalt and is flanked by well-manicured hedges. On the left, there are several large, leafy trees, and on the right, there are more trees and a dense hedge. In the background, a modern building with large glass windows is visible. A yellow sports car is driving away on the driveway. The overall atmosphere is peaceful and elegant.

EVERY DRIVE IN
FEELS LIKE A
NEW BEGINNING

Artist's Impression

DRIVEWAY

LUXURIOUS
AMENITIES

FOR EVERY
MOMENT

FORETT AT BUKIT TIMAH

SITE PLAN

FOR FIRST IMPRESSIONS

- 01 Grand Courtyard
- 02 Drop Off

FOR SOCIAL GATHERINGS

- 09 Lifestyle Pavilion
- 23 Tea Pavilion
- 36 Social Lounge
- 37 Chill Out Lounge
- 44 BBQ Pavilion
- 45 Dining Pavilion

Upper Basement

- 26 Karaoke Room

- 33 Forett Deck
- 34 Forett Club 1 & 2
- 35 Theatre

Sky Terrace

- 46 Floating Deck
- 47 Teppanyaki Sky Lounge
- 48 Sky Pavilion

FOR CONTEMPLATIVE MOMENTS

- 04 Misty Stream
- 05 Waterfall
- 11 Water Wall Court
- 18 Reading Nook
- 21 Water Feature

Upper Basement

- 27 The Hideaway
- 28 Heritage Walk

Sky Terrace

- 49 Sky Pod
- 50 Water Court

FOR THE LOVE OF NATURE

- 03 Summer Lawn
- 08 Sunshine Lawn
- 10 Manicured Garden
- 12 Yoga Lawn
- 22 Reading Lawn
- 38 Picnic Lawn

Upper Basement

- 30 Meditation Lawn
- 31 Blossom Garden
- 32 The Botanic

FOR WELL BEING

- 06 Sun Deck
- 07 30m Lap Pool
- 19 Bubble Jet
- 20 Infinity Pool
- 24 Putting Green
- 39 Aquachill
- 40 30m Lap Pool

Upper Basement

- 13 Gym
- 14 Sun Deck
- 15 50m Lap Pool

Others

- 16 Ladies' Room (with Steam Room)
- 17 Gentlemen's Room (with Steam Room)

- 25 Tennis Court
- 29 Fitness Corner
- 41 Kid's Pool
- 42 Sun Deck
- 43 Playground

OTHERS

- A Guardhouse
- B Gen Set
- C Bin Centre
- D Loading / Unloading Bay

Upper Basement

- E Substation
- F Management Office

UNIT TYPES

- 1 Bedroom + Study
- 2 Bedroom
- 2 Bedroom + Study
- 2 Bedroom Deluxe
- 3 Bedroom Deluxe
- 3 Bedroom Dual Key
- 3 Bedroom Premium
- 4 Bedroom Premium
- 4 Bedroom Suite
- 5 Bedroom Suite

SKY TERRACE Block 34 (Lower Roof)



0 5 10m

Water Tank Area on Roof Top

0 5 10 15 30 50m



SCHEMATIC CHART

BLK 32
TOH TUCK ROAD (S) 596710

	1	2	3	4	5	6
5	C2(DK)(PH)	BHS1a(PH)	C3b(PH)	C1b(PH)	BHS1b(PH)	C1a1(PH)
4	C2(DK)	BHS1a	C3b	C1b	BHS1b	C1a1
3	C2(DK)	BHS1a	C3b	C1b	BHS1b	C1a1
2	C2(DK)	BHS1a	C3b	C1b	BHS1b	C1a1
1	C2(DK)(pd)	BHS1a(pd)	C3b(pd)			

BLK 32A
TOH TUCK ROAD (S) 596110

	7	8	9	10	11	12
5	C3b(PH)	BHS1a(PH)	C2(DK)(PH)	C1a1(PH)	BHS1b(PH)	C1b(PH)
4	C3b	BHS1a	C2(DK)	C1a1	BHS1b	C1b
3	C3b	BHS1a	C2(DK)	C1a1	BHS1b	C1b
2	C3b	BHS1a	C2(DK)	C1a1	BHS1b	C1b
1				C1a1(pd)	BHS1b(pd)	C1b(pd)

BLK 32B
TOH TUCK ROAD (S) 596111

	13	14	15	16	17	18	19	20	21	22
9	BS6a(PH)	AS1a(PH)	BS5a	BS5a	BS6c(PH)	BS6c(PH)	BS5b	AS1a	B2a(PH)	C1d(PH)
8	BS6a	AS1a	BS5a	BS5a	BS6c	BS6c	BS5b	AS1a	B2a	C1d
7	BS6a	AS1a	BS5a	BS5a	BS6c	BS6c	BS5b	AS1a	B2a	C1d
6	BS6a	AS1a	BS5a	BS5a	BS6c	BS6c	BS5b	AS1a	B2a	C1d
5	BS6a	AS1a	BS5a	BS5a	BS6c	BS6c	BS5b	AS1a	B2a	C1d
4	BS6a	AS1a	BS5a	BS5a	BS6c	BS6c	BS5b	AS1a	B2a	C1d
3	BS6a	AS1a	BS5a	BS5a	BS6c	BS6c	BS5b	AS1a	B2a	C1d
2	BS6a	AS1a	BS5a	BS5a	BS6c	BS6c	BS5b	AS1a	B2a	C1d
1	BS6a(p)	AS1a(p)	BS5a(p)	AS2a	BS6c(p)	BS6c(p)	BS5b(p)	AS1a(p)	B2a(p)	C1d(p)

BLK 34
TOH TUCK ROAD (S) 596712

	23	24	25	26	27	28	29	30	31	32
9	BS6c	BS5a	BS5a	AS1a	D3	C1d	B2c	AS1a	BS5b	BS6c
8	BS6c	BS5a	BS5a	AS1a	D3	C1d	B2c	AS1a	BS5b	BS6c
7	BS6c	BS5a	BS5a	AS1a	D3	C1d	B2c	AS1a	BS5b	BS6c
6	BS6c	BS5a	BS5a	AS1a	D3	C1d	B2c	AS1a	BS5b	BS6c
5	BS6c	BS5a	BS5a	AS1a	D3	C1d	B2c	AS1a	BS5b	BS6c
4	BS6c	BS5a	BS5a	AS1a	D3	C1d	B2c	AS1a	BS5b	BS6c
3	BS6c	BS5a	BS5a	AS1a	D3	C1d	B2c	AS1a	BS5b	BS6c
2	BS6c	BS5a	BS5a	AS1a	D3	C1d	B2c	AS1a	BS5b	BS6c
1	BS6c(p)	BS5a(p)	BS5a(p)	AS1a(p)	D3(p)	C1d(p)	B2c(p)	AS1a(p)	AS2b	BS6c(p)

BLK 34A
TOH TUCK ROAD (S) 596112

	33	34	35	36	37	38	39	40	41	42	43
9	BS6a(PH)	AS1a(PH)	AS1a(PH)	B2b	B2b	D1c(PH)	C3c(PH)	BS4	BS4	B2a(PH)	C1c(PH)
8	BS6a	AS1a	AS1a	B2b	B2b	D1c	C3c	BS4	BS4	B2a	C1c
7	BS6a	AS1a	AS1a	B2b	B2b	D1c	C3c	BS4	BS4	B2a	C1c
6	BS6a	AS1a	AS1a	B2b	B2b	D1c	C3c	BS4	BS4	B2a	C1c
5	BS6a	AS1a	AS1a	B2b	B2b	D1c	C3c	BS4	BS4	B2a	C1c
4	BS6a	AS1a	AS1a	B2b	B2b	D1c	C3c	BS4	BS4	B2a	C1c
3	BS6a	AS1a	AS1a	B2b	B2b	D1c	C3c	BS4	BS4	B2a	C1c
2	BS6a	AS1a	AS1a	B2b	B2b	D1c	C3c	BS4	BS4	B2a	C1c
1	BS6a(p)	AS1a(p)	AS1a(p)	B1(p)	B2b(p)	D1c(p)	C3c(p)	BS4(p)	AS1b	B2a(p)	C1c(p)

BLK 34B
TOH TUCK ROAD (S) 596113

	45	46	47	48	49	50	51	52	53	54
9	BS6a(PH)	AS1a(PH)	AS1a(PH)	B2b	B2b	BS6b(PH)	E	BS4	B2a(PH)	C1c(PH)
8	BS6a	AS1a	AS1a	B2b	B2b	BS6b	E	BS4	B2a	C1c
7	BS6a	AS1a	AS1a	B2b	B2b	BS6b	E	BS4	B2a	C1c
6	BS6a	AS1a	AS1a	B2b	B2b	BS6b	E	BS4	B2a	C1c
5	BS6a	AS1a	AS1a	B2b	B2b	BS6b	E	BS4	B2a	C1c
4	BS6a	AS1a	AS1a	B2b	B2b	BS6b	E	BS4	B2a	C1c
3	BS6a	AS1a	AS1a	B2b	B2b	BS6b	E	BS4	B2a	C1c
2	BS6a	AS1a	AS1a	B2b	B2b	BS6b	E	BS4	B2a	C1c
1	BS6a(p)	AS1a(p)	AS1a(p)	B1(p)	B2b(p)	BS6b(p)	D2(p)	AS1b	B2a(p)	C1c(p)

BLK 36
TOH TUCK ROAD (S) 596714

	55	56	57	58	59	60
5	BHS2(PH)	BHS1c(PH)	C1a2(PH)	C3a(PH)	BHS1a(PH)	D1b(PH)
4	BHS2	BHS1c	C1a2	C3a	BHS1a	D1b
3	BHS2	BHS1c	C1a2	C3a	BHS1a	D1b
2	BHS2	BHS1c	C1a2	C3a	BHS1a	D1b
1	BHS2(pd)	BHS1c(pd)	C1a2(pd)	C3a(pd)	BHS1a(pd)	D1b(pd)

BLK 36A
TOH TUCK ROAD (S) 596114

	61	62	63	64	65	66
5	C1b(PH)	BHS1a(PH)	C2(DK)(PH)	C1a1(PH)	BHS1b(PH)	C1b(PH)
4	C1b	BHS1a	C2(DK)	C1a1	BHS1b	C1b
3	C1b	BHS1a	C2(DK)	C1a1	BHS1b	C1b
2	C1b	BHS1a	C2(DK)	C1a1	BHS1b	C1b
1	C1b(pd)	BHS1a(pd)	C2(DK)(pd)	C1a1(pd)	BHS1b(pd)	C1b(pd)

BLK 36B
TOH TUCK ROAD (S) 596115

	67	68	69	70	71	72
5	D1b(PH)	BHS1a(PH)	C2(DK)(PH)	C1a1(PH)	BHS1b(PH)	D1b(PH)
4	D1b	BHS1a	C2(DK)	C1a1	BHS1b	D1b
3	D1b	BHS1a	C2(DK)	C1a1	BHS1b	D1b
2	D1b	BHS1a	C2(DK)	C1a1	BHS1b	D1b
1	D1b(pd)	BHS1a(pd)	C2(DK)(pd)	C1a1(pd)	BHS1b(pd)	D1b(pd)

BLK 38
TOH TUCK ROAD (S) 596716

	73	74	75	76	77	78
5	C4(PH)	BHS1a(PH)	D1a(PH)	C1a2(PH)	BHS1b(PH)	D2(PH)
4	C4	BHS1a	D1a	C1a2	BHS1b	D2
3	C4	BHS1a	D1a	C1a2	BHS1b	D2
2	C4	BHS1a	D1a	C1a2	BHS1b	D2
1	C4(pd)	BHS1a(pd)	D1a(pd)	C1a2(pd)	BHS1b(pd)	D2(pd)

BLK 38A
TOH TUCK ROAD (S) 596116

	79	80	81	82	83	84
5	D1b(PH)	BHS1a(PH)	C2(DK)(PH)	C1b(PH)	BHS1b(PH)	C1a1(PH)
4	D1b	BHS1a	C2(DK)	C1b	BHS1b	C1a1
3	D1b	BHS1a	C2(DK)	C1b	BHS1b	C1a1
2	D1b	BHS1a	C2(DK)	C1b	BHS1b	C1a1
1	D1b(pd)	BHS1a(pd)	C2(DK)(pd)	C1b(pd)	BHS1b(pd)	C1a1(pd)

BLK 38B
TOH TUCK ROAD (S) 596117

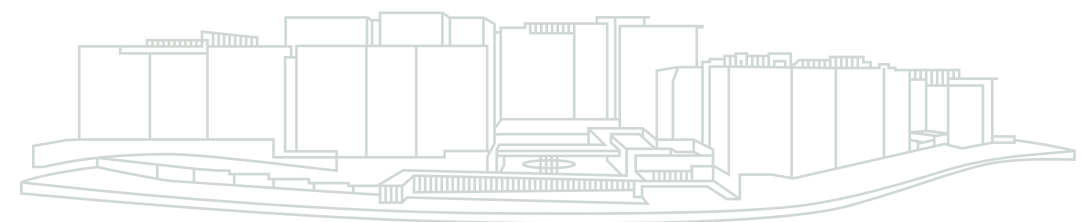
	85	86	87	88	89	90
5	D1b(PH)	BHS1a(PH)	D1a(PH)	C1a1(PH)	BHS1b(PH)	C1b(PH)
4	D1b	BHS1a	D1a	C1a1	BHS1b	C1b
3	D1b	BHS1a	D1a	C1a1	BHS1b	C1b
2	D1b	BHS1a	D1a	C1a1	BHS1b	C1b
1	D1b(pd)	BHS1a(pd)	D1a(pd)	C1a1(pd)	BHS1b(pd)	C1b(pd)

BLK 40
TOH TUCK ROAD (S) 596717

	91	92	93	94	95	96
5	C2(DK)(PH)	BHS1a(PH)	C1b(PH)	C1b(PH)	BHS1b(PH)	C1a1(PH)
4	C2(DK)	BHS1a	C1b	C1b	BHS1b	C1a1
3	C2(DK)	BHS1a	C1b	C1b	BHS1b	C1a1
2	C2(DK)	BHS1a	C1b	C1b	BHS1b	C1a1
1	C2(DK)(pd)	BHS1a(pd)	C1b(pd)	C1b(pd)	BHS1b(pd)	C1a1(pd)

UNIT TYPES

- 1 Bedroom + Study
- 2 Bedroom
- 2 Bedroom + Study
- 2 Bedroom Deluxe
- 3 Bedroom Deluxe
- 3 Bedroom Dual Key
- 3 Bedroom Premium
- 4 Bedroom Premium
- 4 Bedroom Suite
- 5 Bedroom Suite

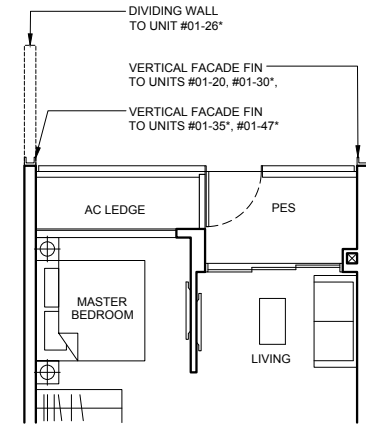




1 BEDROOM + STUDY

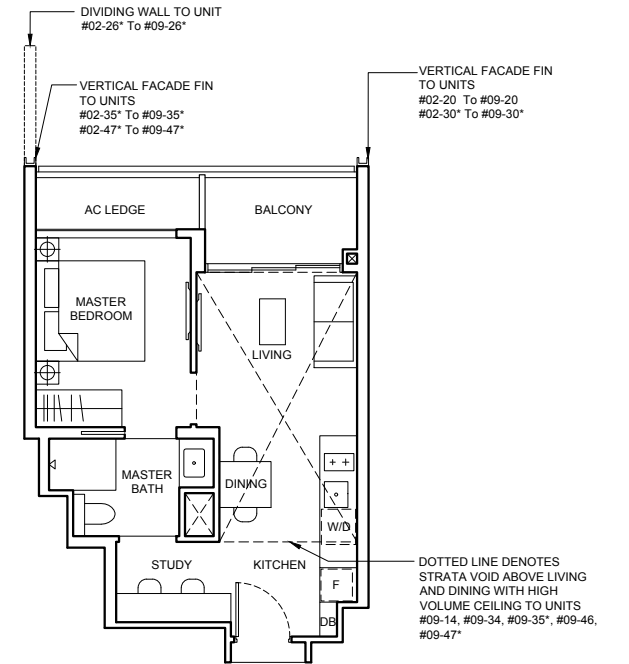
Type AS1a(p) 44 sqm (474 sqft)

Block 32B #01-14 #01-20 Block 34A #01-34 Block 34B #01-46	MIRRORED Block 34 #01-26* #01-30* Block 34A #01-35* Block 34B #01-47*
--	--



Type AS1a 44 sqm (474 sqft)

Block 32B #02-14 To #08-14 #02-20 To #09-20 Block 34A #02-34 To #08-34 Block 34B #02-46 To #08-46	MIRRORED Block 34 #02-26* To #09-26* #02-30* To #09-30* Block 34A #02-35* To #08-35* Block 34B #02-47* To #08-47*
--	--



Type AS1a(PH) 58 sqm (624 sqft)

Strata void area of 14 sqm / 150 sqft above living and dining with high volume ceiling of 4415mm H.

Balcony at top floor is provided with canopy.

Block 32B #09-14 Block 34A #09-34 Block 34B #09-46	MIRRORED Block 34A #09-35* Block 34B #09-47*
--	---

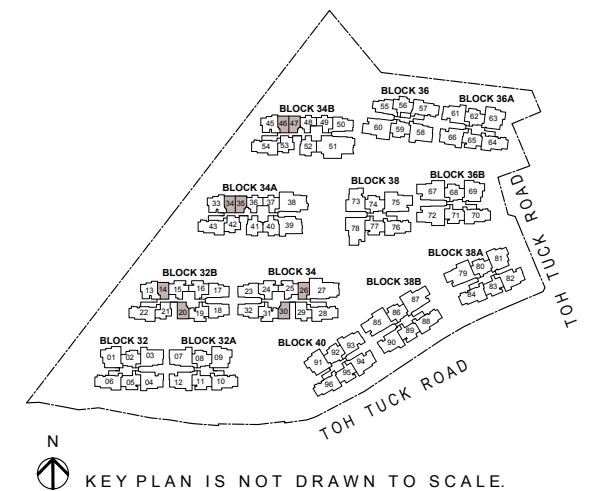
LEGEND

[W/D] WASHER CUM DRYER	[F] INTEGRATED FRIDGE
------------------------	-----------------------

Note

- Area includes AC ledge, balcony and private enclosed space (PES), strata void (where applicable).
- The above plans and illustrations are subject to change as maybe required or approved by the relevant authorities.
- All floor areas are approximate only and subject to final survey.
- Please refer to the key plan for orientation.
- High volume space in (pd) unit does not constitute strata area.
- Service voids are excluded from strata area.
- RC ledge and / or RC trellis are excluded from strata area.

0 1 2 3 5M

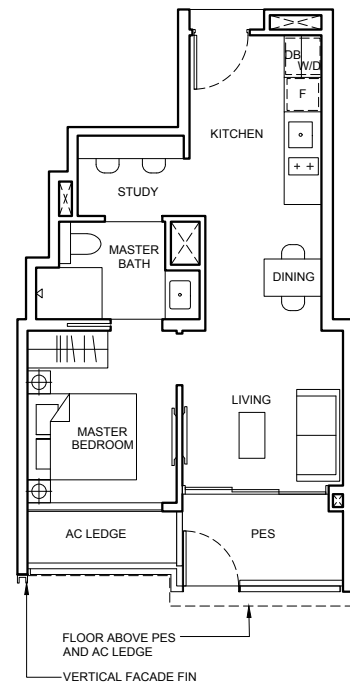


1 BEDROOM + STUDY

Type AS1b (PES)

46 sqm (495 sqft)

Block 34A
#01-41
Block 34B
#01-52



Type AS2a (PES)

45 sqm (484 sqft)

Block 32B
#01-16



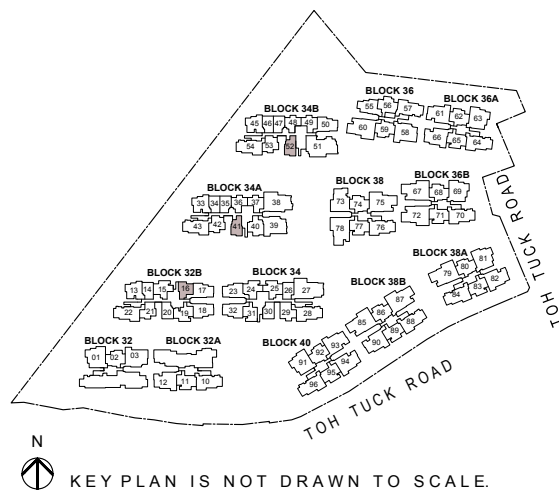
LEGEND

W/D WASHER CUM DRYER F INTEGRATED FRIDGE

Note

- Area includes AC ledge, balcony and private enclosed space (PES), strata void (where applicable).
- The above plans and illustrations are subject to change as maybe required or approved by the relevant authorities.
- All floor areas are approximate only and subject to final survey.
- Please refer to the key plan for orientation.
- High volume space in (pd) unit does not constitute strata area.
- Service voids are excluded from strata area.
- RC ledge and / or RC trellis are excluded from strata area.

0 1 2 3 5M

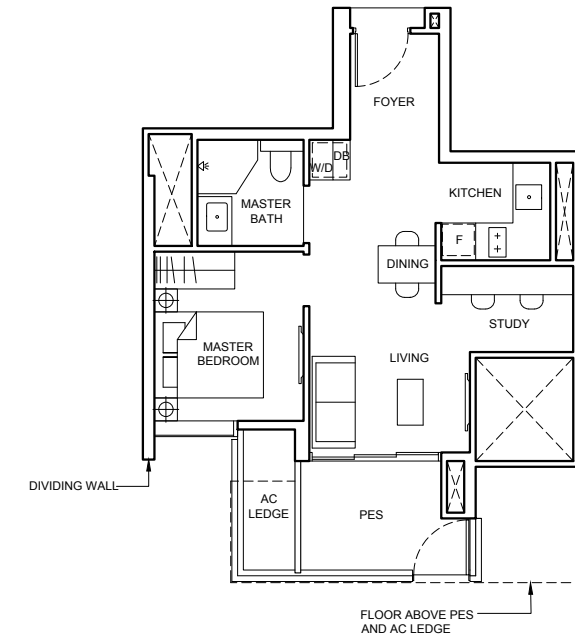


1 BEDROOM + STUDY

Type AS2b (PES)

47 sqm (506 sqft)

Block 34
#01-31



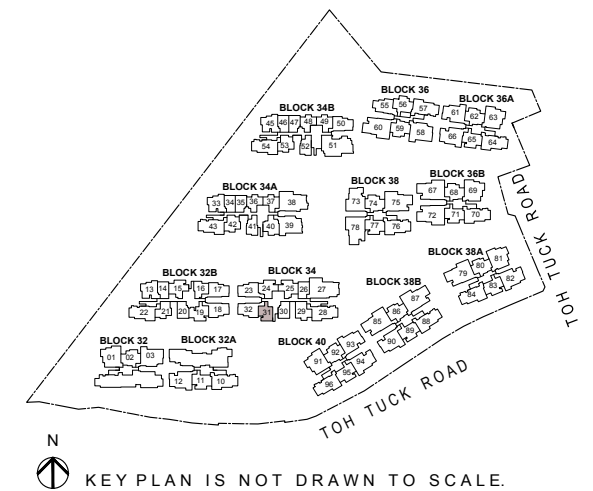
LEGEND

W/D WASHER CUM DRYER F INTEGRATED FRIDGE

Note

- Area includes AC ledge, balcony and private enclosed space (PES), strata void (where applicable).
- The above plans and illustrations are subject to change as maybe required or approved by the relevant authorities.
- All floor areas are approximate only and subject to final survey.
- Please refer to the key plan for orientation.
- High volume space in (pd) unit does not constitute strata area.
- Service voids are excluded from strata area.
- RC ledge and / or RC trellis are excluded from strata area.

0 1 2 3 5M

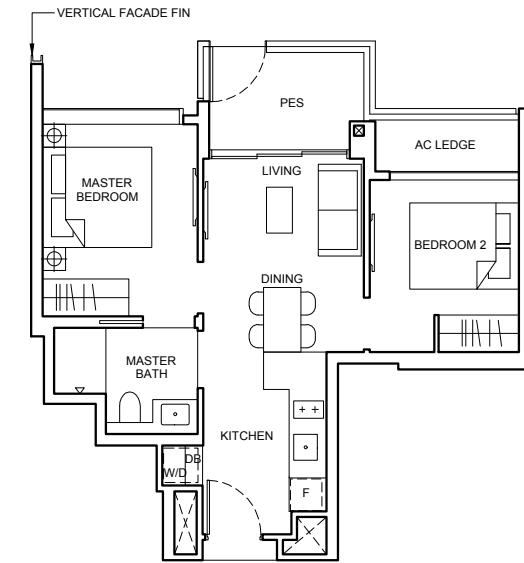




2 BEDROOM

Type B1(p)
51 sqm (549 sqft)

Block 34A
#01-36
Block 34B
#01-48



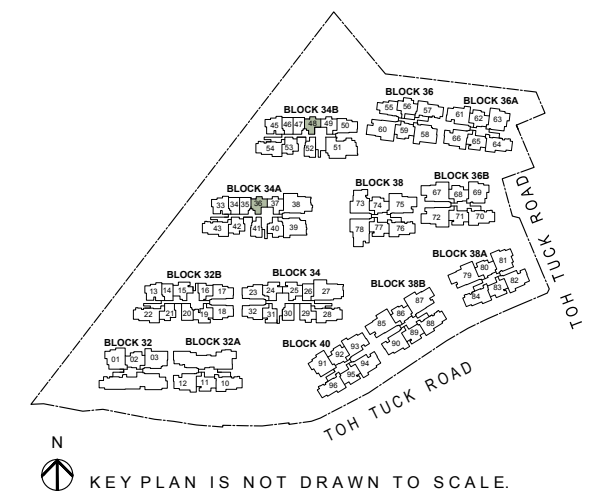
LEGEND

[W/D] WASHER CUM DRYER [F] INTEGRATED FRIDGE

Note

- Area includes AC ledge, balcony and private enclosed space (PES), strata void (where applicable).
- The above plans and illustrations are subject to change as maybe required or approved by the relevant authorities.
- All floor areas are approximate only and subject to final survey.
- Please refer to the key plan for orientation.
- High volume space in (pd) unit does not constitute strata area.
- Service voids are excluded from strata area.
- RC ledge and / or RC trellis are excluded from strata area.

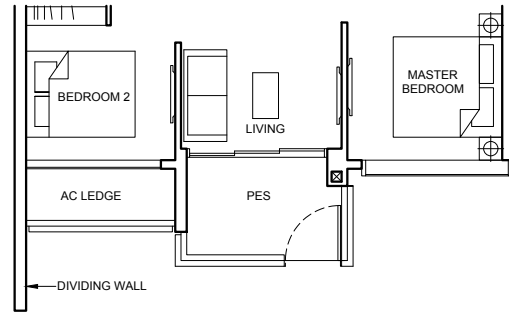
0 1 2 3 5M



2 BEDROOM

Type B2a(p) 53 sqm (570 sqft)

- Block 32B
#01-21
- Block 34A
#01-42
- Block 34B
#01-53



Type B2a 53 sqm (570 sqft)

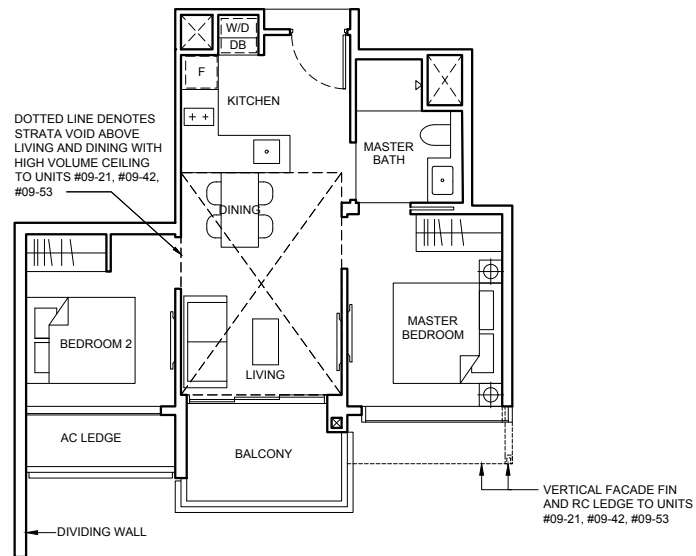
- Block 32B
#02-21 To #08-21
- Block 34A
#02-42 To #08-42
- Block 34B
#02-53 To #08-53

Type B2a(PH) 65 sqm (700 sqft)

Strata void area of 12 sqm / 130 sqft above living and dining with high volume ceiling of 4415mm H.

Balcony at top floor is provided with canopy.

- Block 32B
#09-21
- Block 34A
#09-42
- Block 34B
#09-53

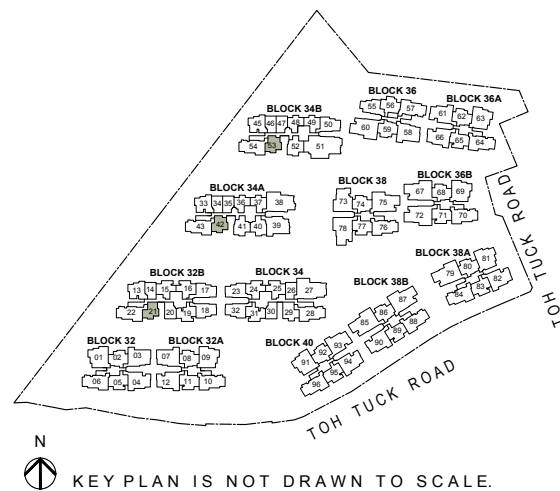


LEGEND

- [W/D] WASHER CUM DRYER
- [F] INTEGRATED FRIDGE

Note

- Area includes AC ledge, balcony and private enclosed space (PES), strata void (where applicable).
- The above plans and illustrations are subject to change as maybe required or approved by the relevant authorities.
- All floor areas are approximate only and subject to final survey.
- Please refer to the key plan for orientation.
- High volume space in (pd) unit does not constitute strata area.
- Service voids are excluded from strata area.
- RC ledge and / or RC trellis are excluded from strata area.

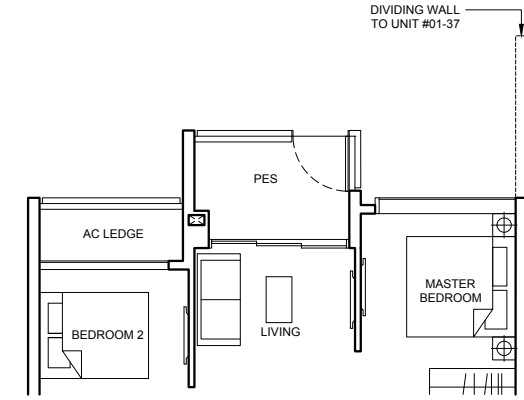


KEY PLAN IS NOT DRAWN TO SCALE.

2 BEDROOM

Type B2b(p) 53 sqm (570 sqft)

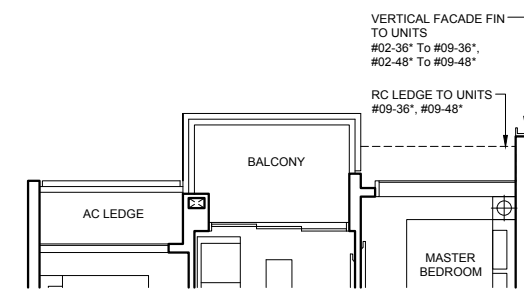
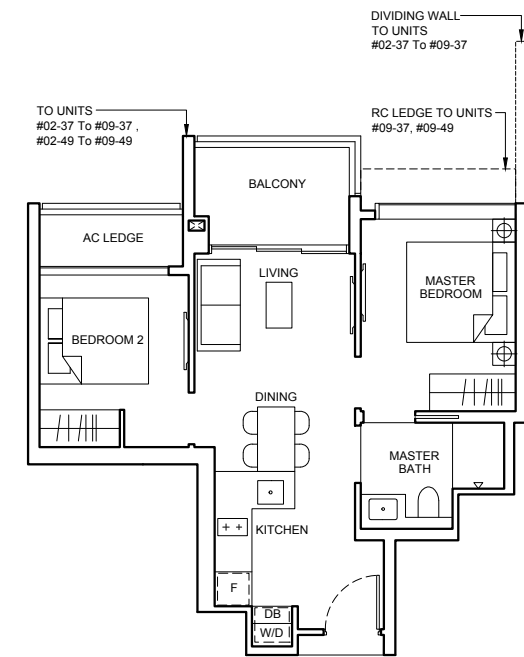
- Block 34A
#01-37
- Block 34B
#01-49



Type B2b 53 sqm (570 sqft)

Balcony at top floor is provided with canopy.

- Block 34A
#02-37 To #09-37
 - Block 34B
#02-49 To #09-49
- MIRRORED**
- Block 34A
#02-36* To #09-36*
 - Block 34B
#02-48* To #09-48*



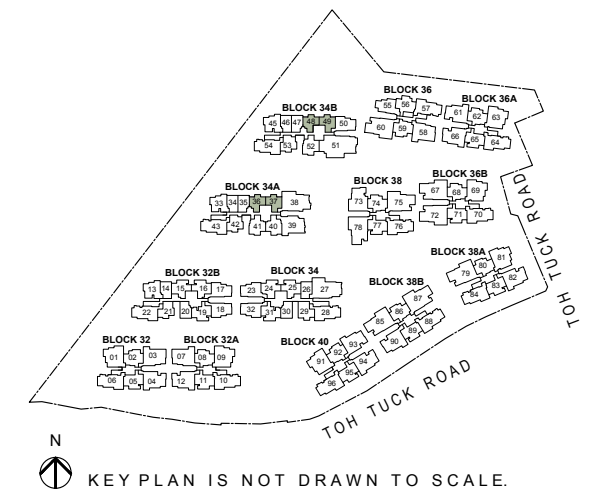
Applicable to units #02-36* To #09-36*
#02-48* To #09-48*

LEGEND

- [W/D] WASHER CUM DRYER
- [F] INTEGRATED FRIDGE

Note

- Area includes AC ledge, balcony and private enclosed space (PES), strata void (where applicable).
- The above plans and illustrations are subject to change as maybe required or approved by the relevant authorities.
- All floor areas are approximate only and subject to final survey.
- Please refer to the key plan for orientation.
- High volume space in (pd) unit does not constitute strata area.
- Service voids are excluded from strata area.
- RC ledge and / or RC trellis are excluded from strata area.

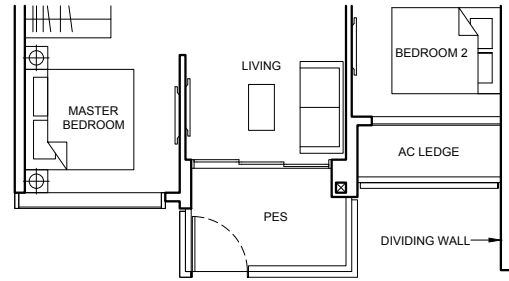


KEY PLAN IS NOT DRAWN TO SCALE.

2 BEDROOM

Type B2c(p) 56 sqm (603 sqft)

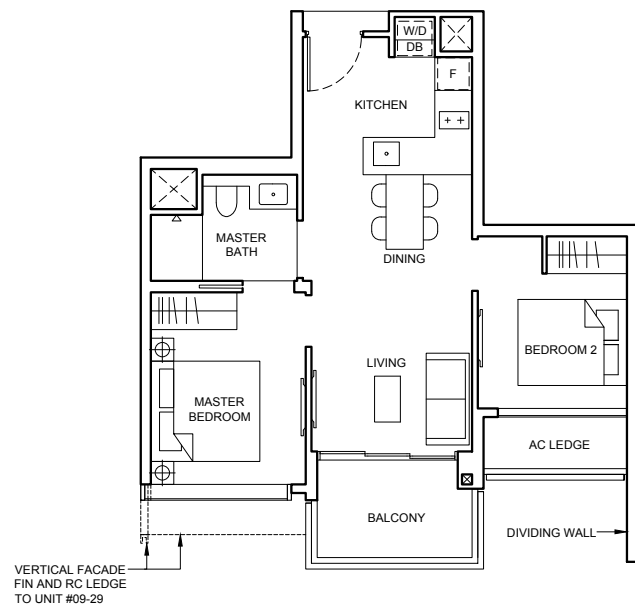
Block 34
#01-29



Type B2c 56 sqm (603 sqft)

Balcony at top floor is provided with canopy.

Block 34
#02-29 To #09-29



VERTICAL FACADE FIN AND RC LEDGE TO UNIT #09-29

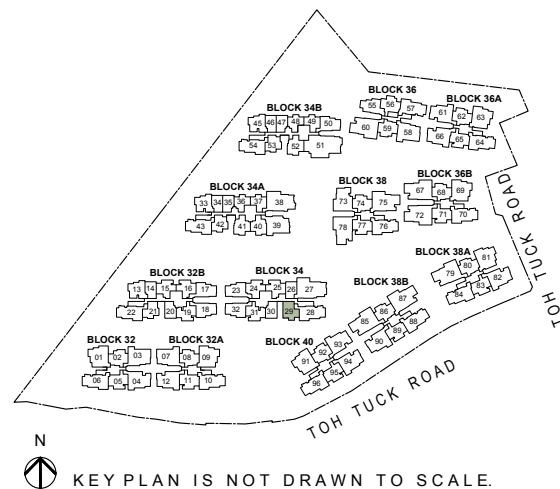
LEGEND

W/D WASHER CUM DRYER F INTEGRATED FRIDGE

Note

- Area includes AC ledge, balcony and private enclosed space (PES), strata void (where applicable).
- The above plans and illustrations are subject to change as maybe required or approved by the relevant authorities.
- All floor areas are approximate only and subject to final survey.
- Please refer to the key plan for orientation.
- High volume space in (pd) unit does not constitute strata area.
- Service voids are excluded from strata area.
- RC ledge and / or RC trellis are excluded from strata area.

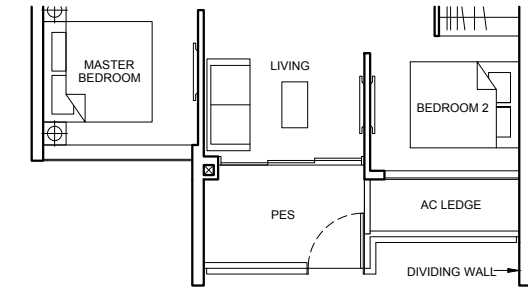
0 1 2 3 5M



2 BEDROOM + STUDY

Type BS4(p) 64 sqm (689 sqft)

Block 34A
#01-40

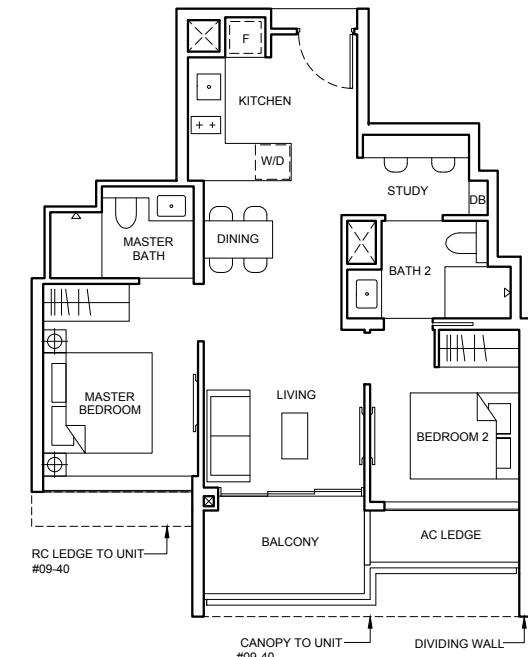


Type BS4 64 sqm (689 sqft)

Balcony at top floor is provided with canopy.

Block 34A
#02-40 To #09-40

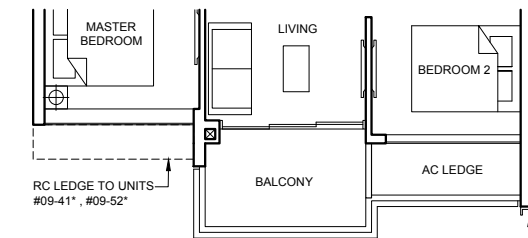
MIRRORED
Block 34A
#02-41* To #09-41*
Block 34B
#02-52* To #09-52*



RC LEDGE TO UNIT #09-40

CANOPY TO UNIT #09-40

DIVIDING WALL



RC LEDGE TO UNITS #09-41*, #09-52*

VERTICAL FACADE FIN #02-41* To #09-41*, #02-52* To #09-52*

Applicable to units #02-41* To #09-41*
#02-52* To #09-52*

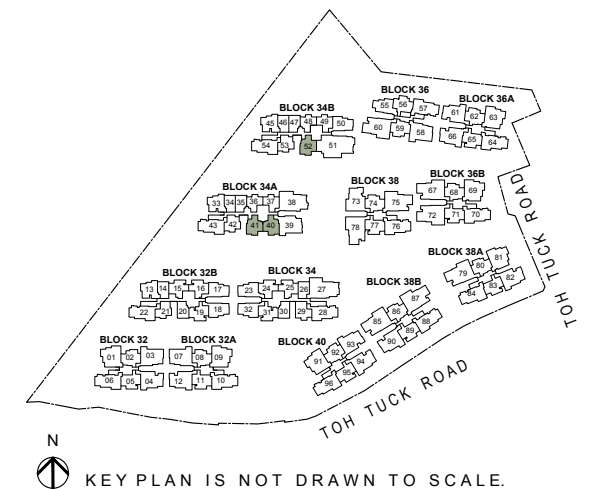
LEGEND

W/D WASHER CUM DRYER F INTEGRATED FRIDGE

Note

- Area includes AC ledge, balcony and private enclosed space (PES), strata void (where applicable).
- The above plans and illustrations are subject to change as maybe required or approved by the relevant authorities.
- All floor areas are approximate only and subject to final survey.
- Please refer to the key plan for orientation.
- High volume space in (pd) unit does not constitute strata area.
- Service voids are excluded from strata area.
- RC ledge and / or RC trellis are excluded from strata area.

0 1 2 3 5M

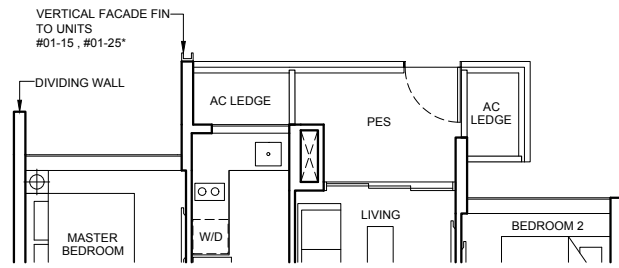


2 BEDROOM + STUDY

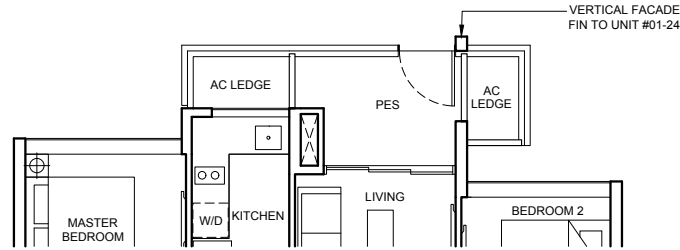
Type BS5a(p) 67 sqm (721 sqft)

Block 32B
#01-15
Block 34
#01-24

MIRRORED
Block 34
#01-25*



Applicable to units #01-15, #01-25*



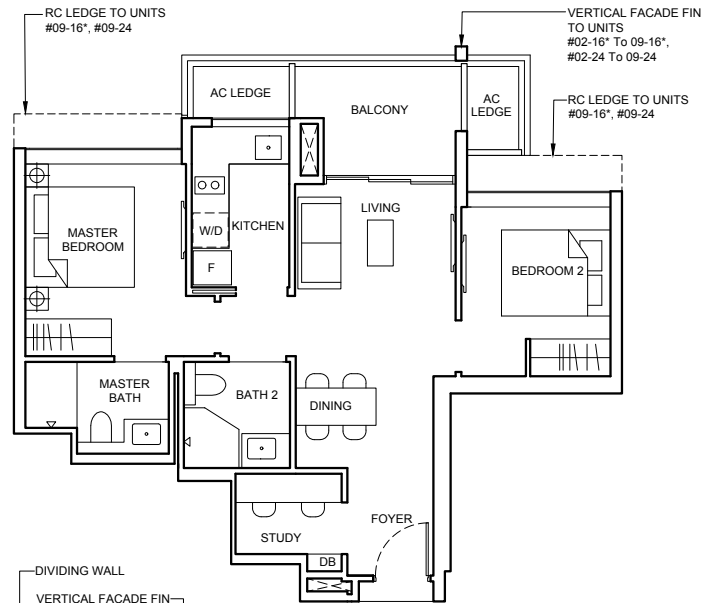
Applicable to unit #01-24

Type BS5a 67 sqm (721 sqft)

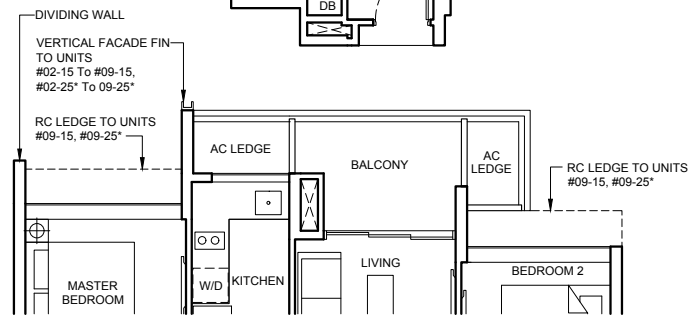
Balcony at top floor is provided with canopy.

Block 32B
#02-15 To #09-15
Block 34
#02-24 To #09-24

MIRRORED
Block 32B
#02-16* To #09-16*
Block 34
#02-25* To #09-25*



Applicable to units #02-15 To #09-15
#02-25* To #09-25*



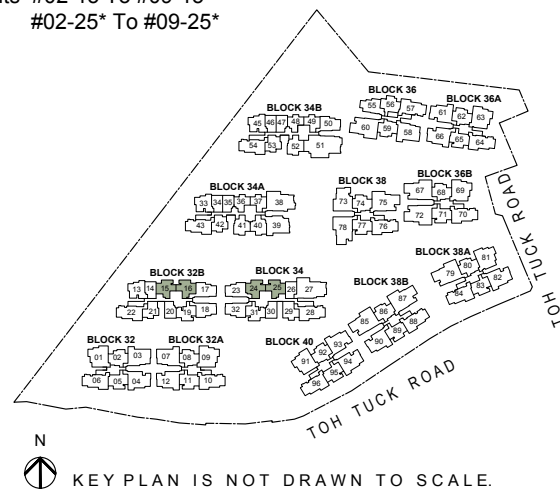
LEGEND

W/D WASHER CUM DRYER F FRIDGE

Note

- Area includes AC ledge, balcony and private enclosed space (PES), strata void (where applicable).
- The above plans and illustrations are subject to change as maybe required or approved by the relevant authorities.
- All floor areas are approximate only and subject to final survey.
- Please refer to the key plan for orientation.
- High volume space in (pd) unit does not constitute strata area.
- Service voids are excluded from strata area.
- RC ledge and / or RC trellis are excluded from strata area.

0 1 2 3 5M

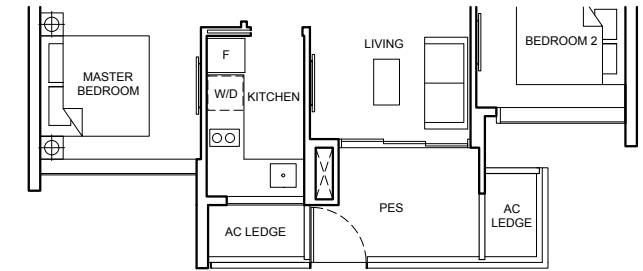


KEY PLAN IS NOT DRAWN TO SCALE.

2 BEDROOM + STUDY

Type BS5b(p) 67 sqm (721 sqft)

Block 32B
#01-19

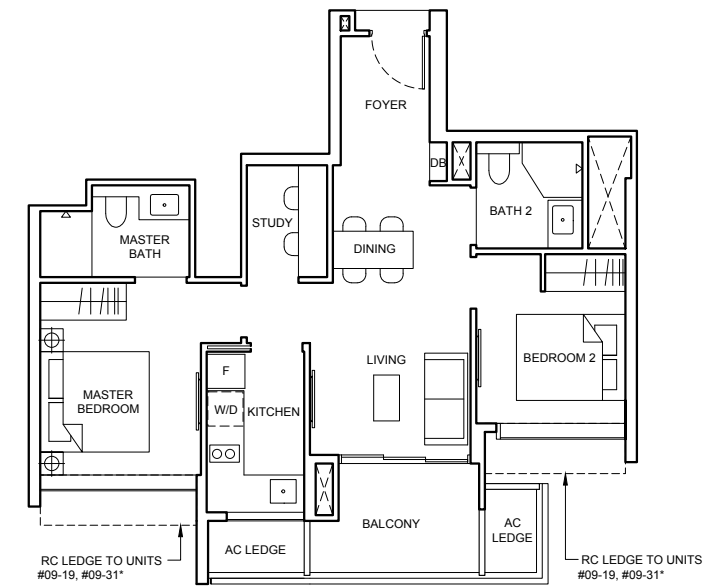


Type BS5b 67 sqm (721 sqft)

Balcony at top floor is provided with canopy.

Block 32B
#02-19 To #09-19

MIRRORED
Block 34
#02-31* To #09-31*



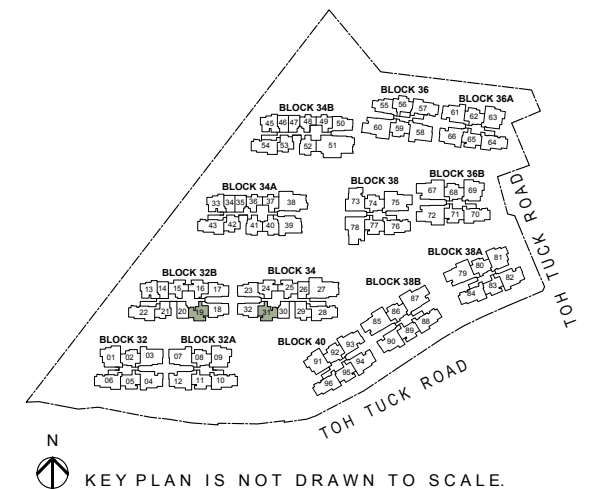
LEGEND

W/D WASHER CUM DRYER F FRIDGE

Note

- Area includes AC ledge, balcony and private enclosed space (PES), strata void (where applicable).
- The above plans and illustrations are subject to change as maybe required or approved by the relevant authorities.
- All floor areas are approximate only and subject to final survey.
- Please refer to the key plan for orientation.
- High volume space in (pd) unit does not constitute strata area.
- Service voids are excluded from strata area.
- RC ledge and / or RC trellis are excluded from strata area.

0 1 2 3 5M

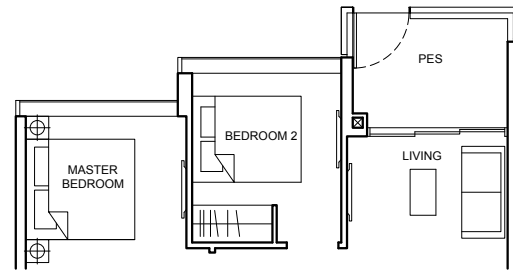


KEY PLAN IS NOT DRAWN TO SCALE.

2 BEDROOM + STUDY

Type BS6a(p) 67 sqm (721 sqft)

- Block 32B
#01-13
- Block 34A
#01-33
- Block 34B
#01-45



Type BS6a 67 sqm (721 sqft)

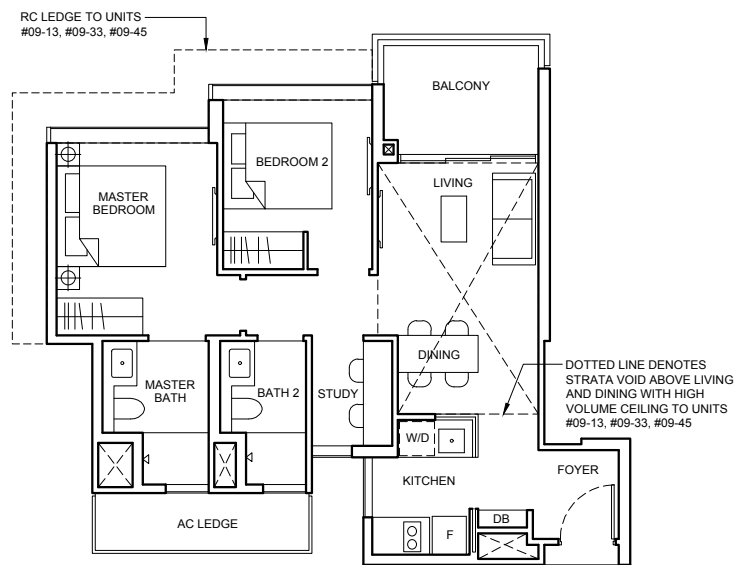
- Block 32B
#02-13 To #08-13
- Block 34A
#02-33 To #08-33
- Block 34B
#02-45 To #08-45

Type BS6a(PH) 80 sqm (861 sqft)

Strata void area of 13 sqm / 140 sqft above living and dining with high volume ceiling of 4415mm H.

Balcony at top floor is provided with canopy.

- Block 32B
#09-13
- Block 34A
#09-33
- Block 34B
#09-45

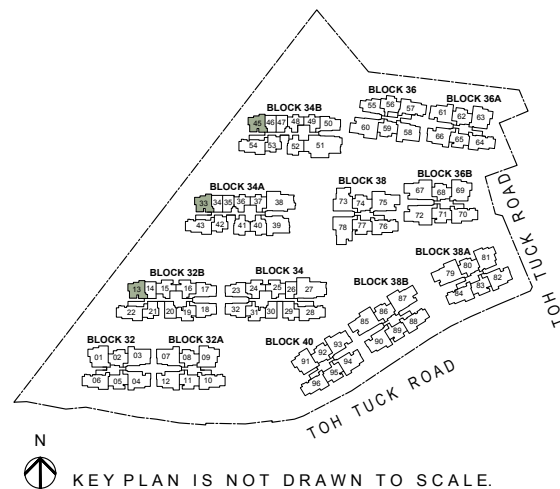


LEGEND

- W/D | WASHER CUM DRYER
- F | FRIDGE

Note

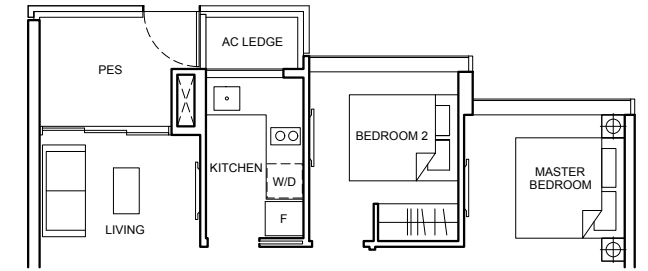
- Area includes AC ledge, balcony and private enclosed space (PES), strata void (where applicable).
- The above plans and illustrations are subject to change as maybe required or approved by the relevant authorities.
- All floor areas are approximate only and subject to final survey.
- Please refer to the key plan for orientation.
- High volume space in (pd) unit does not constitute strata area.
- Service voids are excluded from strata area.
- RC ledge and / or RC trellis are excluded from strata area.



2 BEDROOM + STUDY

Type BS6b(p) 70 sqm (753 sqft)

- Block 34B
#01-50



Type BS6b 70 sqm (753 sqft)

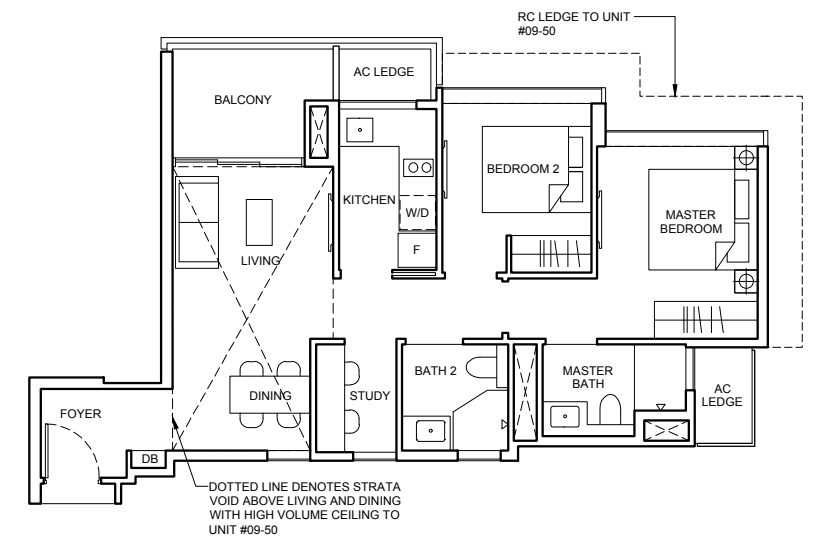
- Block 34B
#02-50 To #08-50

Type BS6b(PH) 84 sqm (904 sqft)

Strata void area of 14 sqm / 151 sqft above living and dining with high volume ceiling of 4415mm H.

Balcony at top floor is provided with canopy.

- Block 34B
#09-50

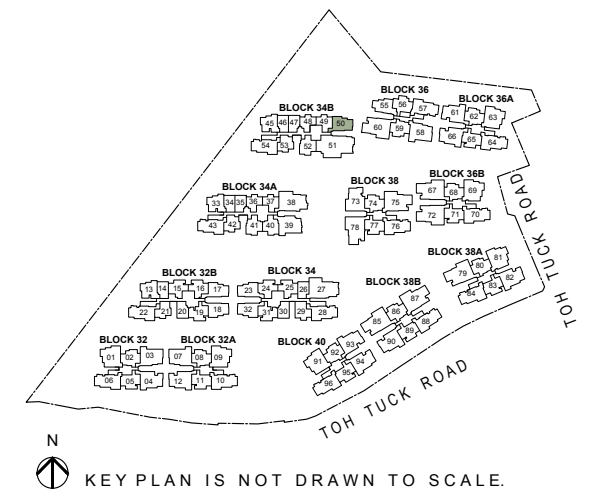


LEGEND

- W/D | WASHER CUM DRYER
- F | FRIDGE

Note

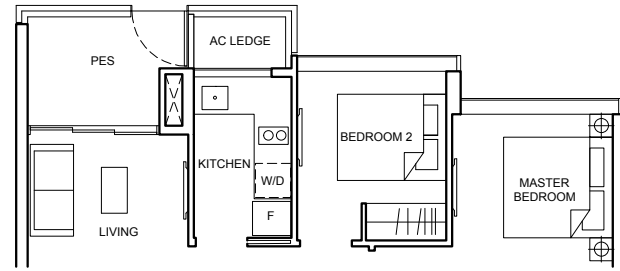
- Area includes AC ledge, balcony and private enclosed space (PES), strata void (where applicable).
- The above plans and illustrations are subject to change as maybe required or approved by the relevant authorities.
- All floor areas are approximate only and subject to final survey.
- Please refer to the key plan for orientation.
- High volume space in (pd) unit does not constitute strata area.
- Service voids are excluded from strata area.
- RC ledge and / or RC trellis are excluded from strata area.



2 BEDROOM + STUDY

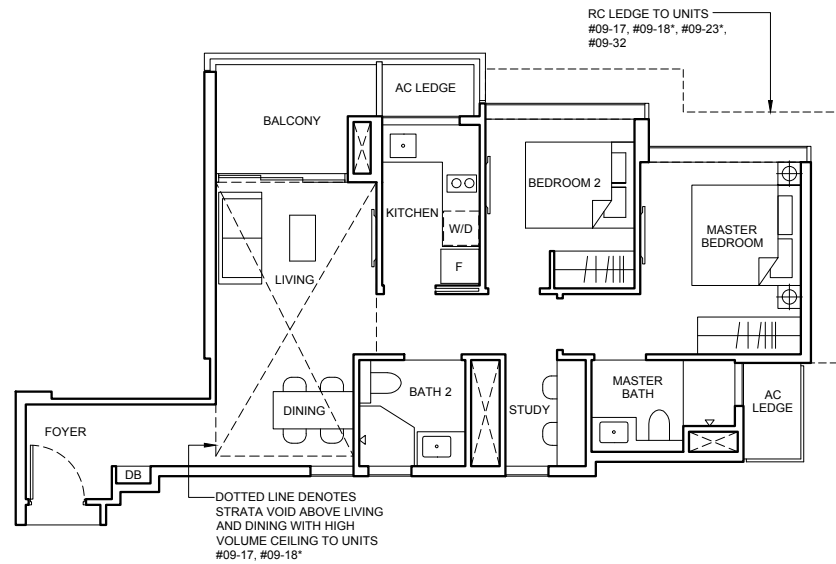
Type BS6c(p)

- 71 sqm (764 sqft)
- Block 32B**
#01-17
- Block 34**
#01-32
- MIRRORED**
- Block 32B**
#01-18*
- Block 34**
#01-23*



Type BS6c

- 71 sqm (764 sqft)
- Block 32B**
#02-17 To #08-17
- Block 34**
#02-32 To #09-32
- MIRRORED**
- Block 32B**
#02-18* To #08-18*
- Block 34**
#02-23* To #09-23*



Type BS6c(PH)

85 sqm (915 sqft)

Strata void area of 14 sqm / 151 sqft above living and dining with high volume ceiling of 4415mm H.

Balcony at top floor is provided with canopy.

- Block 32B**
#09-17
- MIRRORED**
- Block 32B**
#09-18*

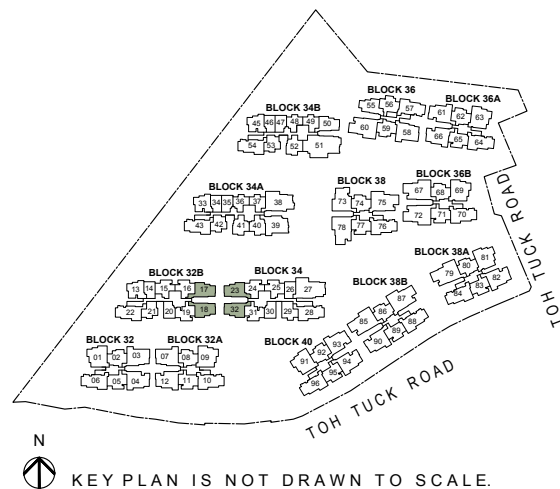
LEGEND

- W/D | WASHER CUM DRYER
- F | FRIDGE

Note

- Area includes AC ledge, balcony and private enclosed space (PES), strata void (where applicable).
- The above plans and illustrations are subject to change as maybe required or approved by the relevant authorities.
- All floor areas are approximate only and subject to final survey.
- Please refer to the key plan for orientation.
- High volume space in (pd) unit does not constitute strata area.
- Service voids are excluded from strata area.
- RC ledge and / or RC trellis are excluded from strata area.

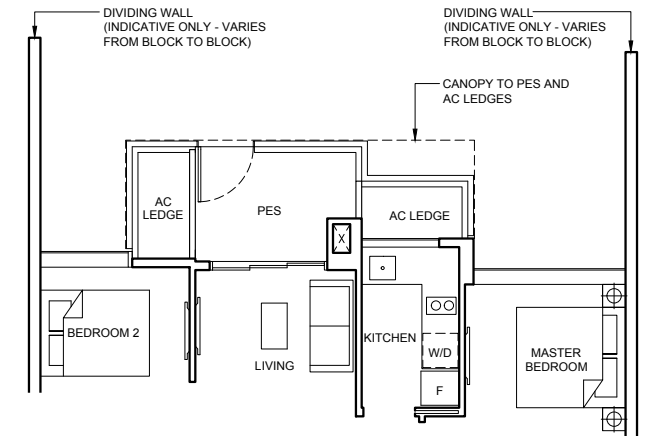
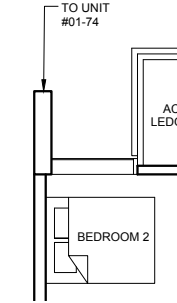
0 1 2 3 5M



2 BEDROOM DELUXE

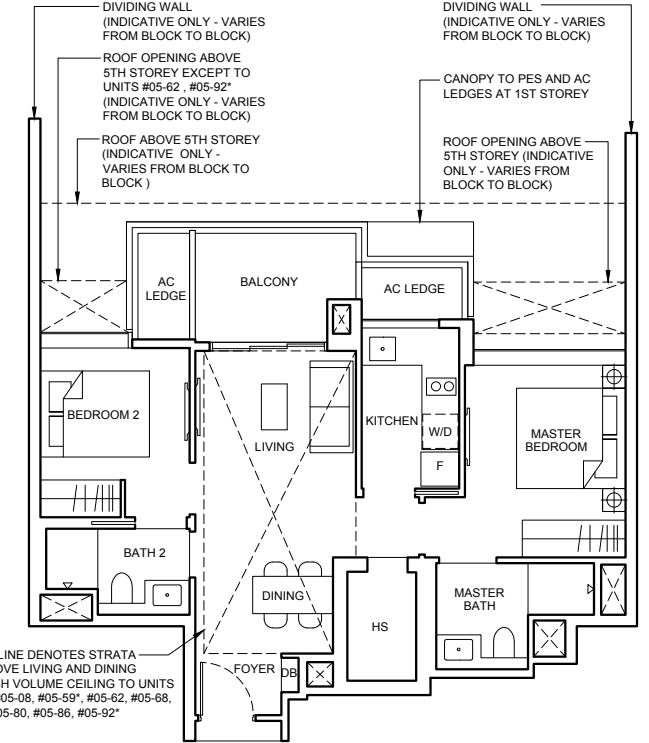
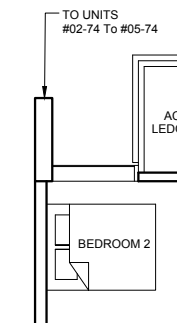
Type BHS1a(pd)

- 68 sqm (732 sqft)
- Block 36A**
#01-62
- Block 36B**
#01-68
- Block 38**
#01-74
- Block 38A**
#01-80
- Block 38B**
#01-86
- MIRRORED**
- Block 32**
#01-02*
- Block 36**
#01-59*
- Block 40**
#01-92*



Type BHS1a

- 68 sqm (732 sqft)
- Block 32A**
#02-08 To #04-08
- Block 36A**
#02-62 To #04-62
- Block 36B**
#02-68 To #04-68
- Block 38**
#02-74 To #04-74
- Block 38A**
#02-80 To #04-80
- Block 38B**
#02-86 To #04-86
- MIRRORED**
- Block 32**
#02-02* To #04-02*
- Block 36**
#02-59* To #04-59*
- Block 40**
#02-92* To #04-92*



Type BHS1a(PH)

84 sqm (904 sqft)

Strata void area of 16 sqm / 172 sqft above living and dining with high volume ceiling of 4590mm H.

- Block 32A**
#05-08
- Block 36A**
#05-62
- Block 36B**
#05-68
- Block 38**
#05-74
- Block 38A**
#05-80
- Block 38B**
#05-86
- MIRRORED**
- Block 32**
#05-02*
- Block 36**
#05-59*
- Block 40**
#05-92*

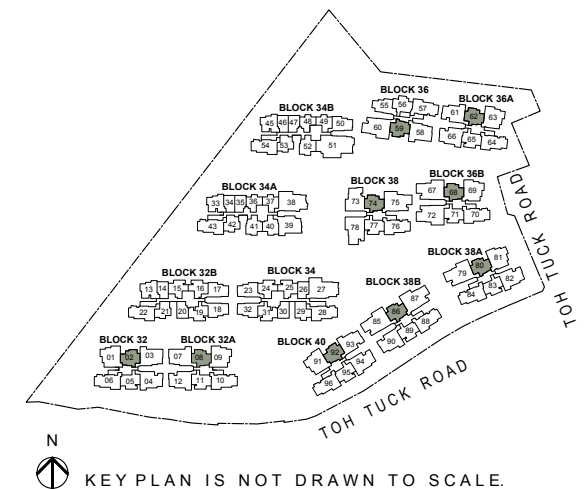
LEGEND

- W/D | WASHER CUM DRYER
- F | FRIDGE

Note

- Area includes AC ledge, balcony and private enclosed space (PES), strata void (where applicable).
- The above plans and illustrations are subject to change as maybe required or approved by the relevant authorities.
- All floor areas are approximate only and subject to final survey.
- Please refer to the key plan for orientation.
- High volume space in (pd) unit does not constitute strata area.
- Service voids are excluded from strata area.
- RC ledge and / or RC trellis are excluded from strata area.

0 1 2 3 5M



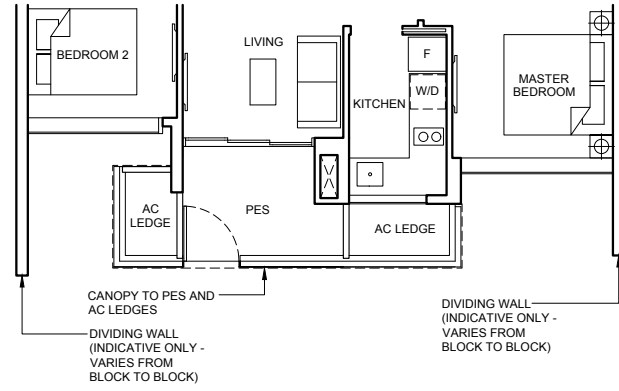
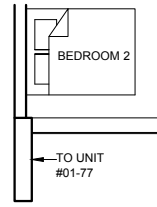
2 BEDROOM DELUXE

Type BHS1b(pd)

69 sqm (743 sqft)

- Block 32A**
#01-11
- Block 36A**
#01-65
- Block 36B**
#01-71
- Block 38**
#01-77
- Block 38B**
#01-89

- MIRRORED**
- Block 38A**
#01-83*
 - Block 40**
#01-95*

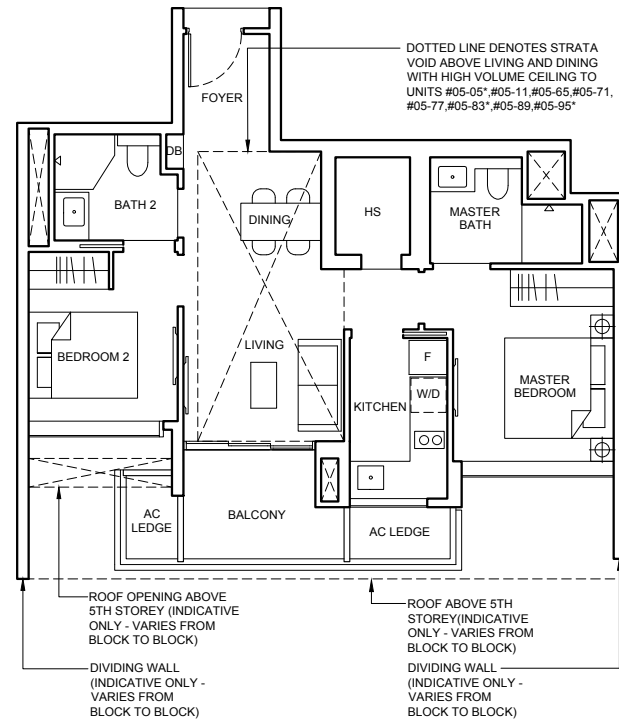
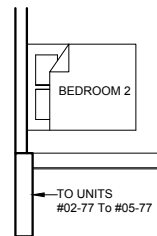


Type BHS1b

69 sqm (743 sqft)

- Block 32A**
#02-11 To #04-11
- Block 36A**
#02-65 To #04-65
- Block 36B**
#02-71 To #04-71
- Block 38**
#02-77 To #04-77
- Block 38B**
#02-89 To #04-89

- MIRRORED**
- Block 32**
#02-05* To #04-05*
 - Block 38A**
#02-83* To #04-83*
 - Block 40**
#02-95* To #04-95*



Type BHS1b(PH)

83 sqm (893 sqft)

strata void area of 14 sqm / 150 sqft above living and dining with high volume ceiling of 4590mm H.

- Block 32A**
#05-11
- Block 36A**
#05-65
- Block 36B**
#05-71
- Block 38**
#05-77
- Block 38B**
#05-89

- MIRRORED**
- Block 32**
#05-05*
 - Block 38A**
#05-83*
 - Block 40**
#05-95*

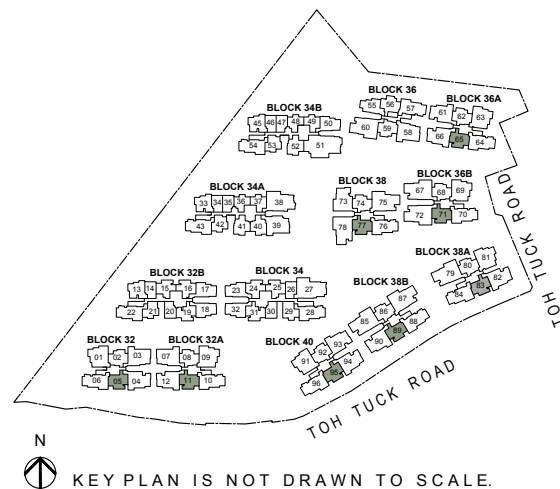


LEGEND

- [W/D] WASHER CUM DRYER
- [F] FRIDGE

Note

- Area includes AC ledge, balcony and private enclosed space (PES), strata void (where applicable).
- The above plans and illustrations are subject to change as maybe required or approved by the relevant authorities.
- All floor areas are approximate only and subject to final survey.
- Please refer to the key plan for orientation.
- High volume space in (pd) unit does not constitute strata area.
- Service voids are excluded from strata area.
- RC ledge and / or RC trellis are excluded from strata area.

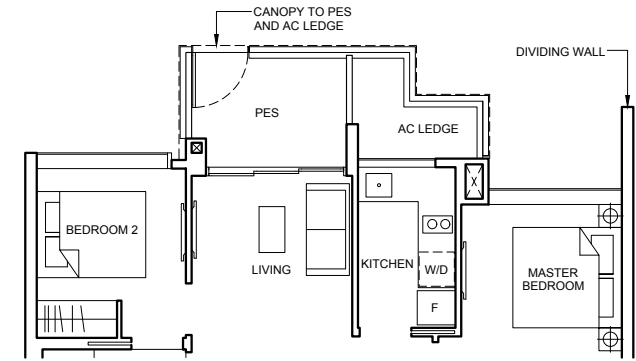


2 BEDROOM DELUXE

Type BHS1c(pd)

71 sqm (764 sqft)

- Block 36**
#01-56



Type BHS1c

71 sqm (764 sqft)

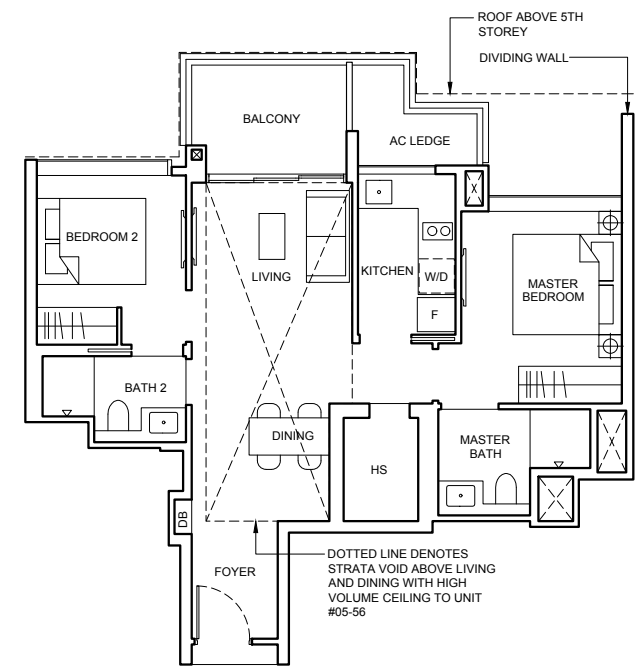
- Block 36**
#02-56 To #04-56

Type BHS1c(PH)

88 sqm (947 sqft)

Strata void area of 17 sqm / 183 sqft above living and dining with high volume ceiling of 4590mm H.

- Block 36**
#05-56

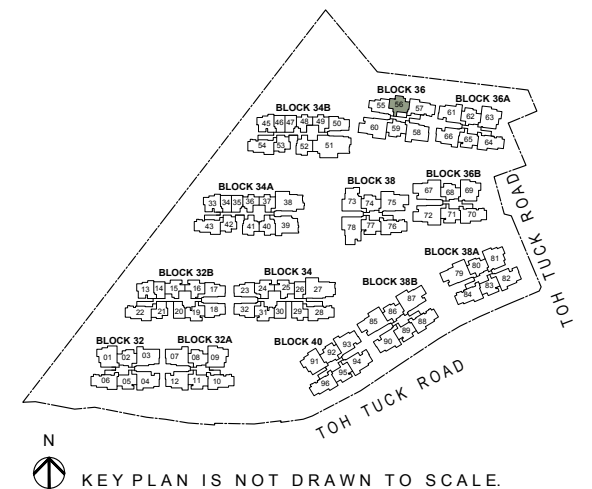


LEGEND

- [W/D] WASHER CUM DRYER
- [F] FRIDGE

Note

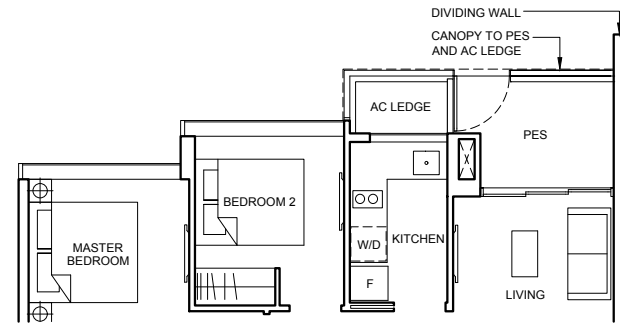
- Area includes AC ledge, balcony and private enclosed space (PES), strata void (where applicable).
- The above plans and illustrations are subject to change as maybe required or approved by the relevant authorities.
- All floor areas are approximate only and subject to final survey.
- Please refer to the key plan for orientation.
- High volume space in (pd) unit does not constitute strata area.
- Service voids are excluded from strata area.
- RC ledge and / or RC trellis are excluded from strata area.



2 BEDROOM DELUXE

Type BHS2(pd) 71 sqm (764 sqft)

Block 36
#01-55



Type BHS2 71 sqm (764 sqft)

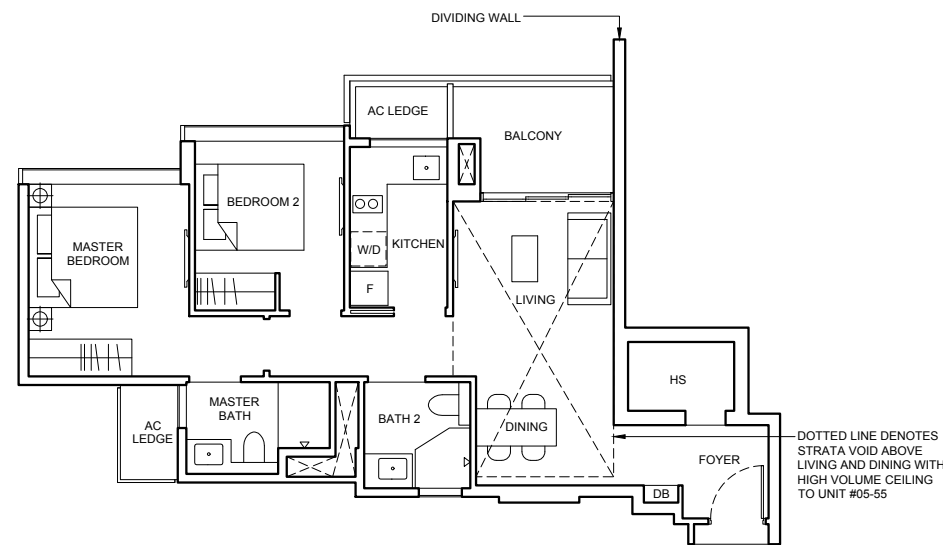
Block 36
#02-55 To #04-55

Type BHS2(PH) 86 sqm (926 sqft)

Strata void area of 15 sqm / 162 sqft above living and dining with high volume ceiling of 4590mm H.

Balcony at top floor is provided with canopy.

Block 36
#05-55



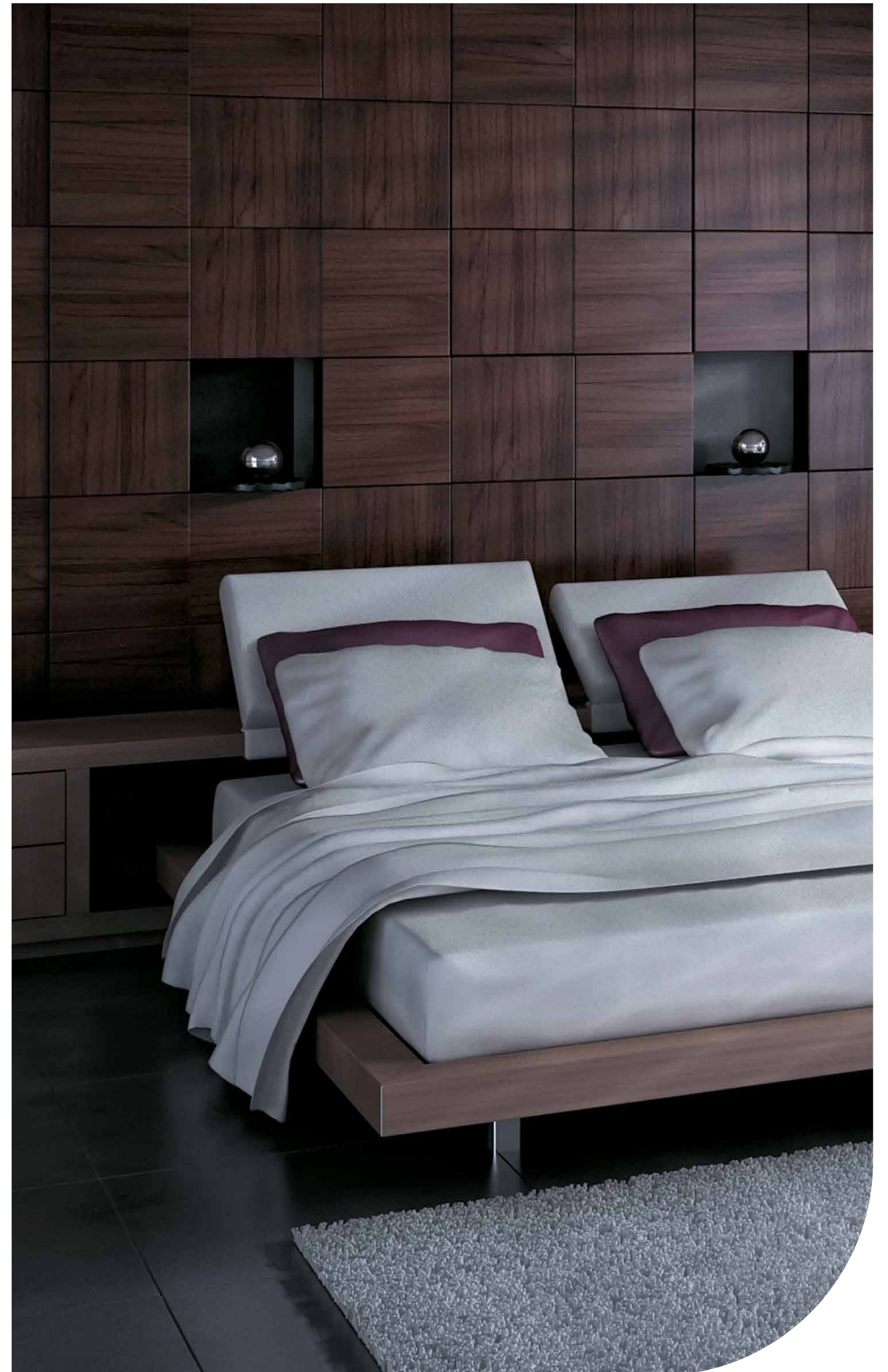
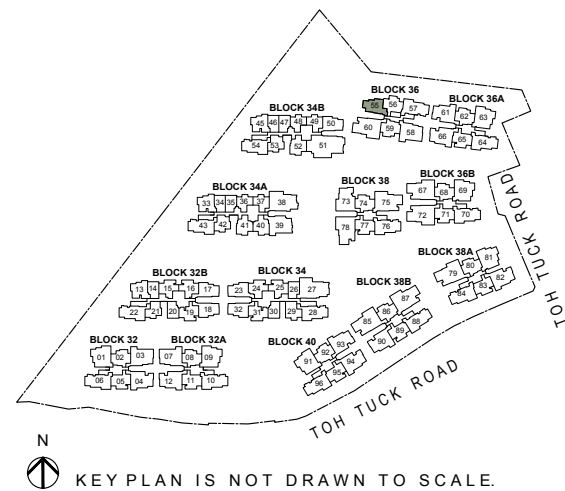
LEGEND

W/D WASHER CUM DRYER F FRIDGE

Note

- Area includes AC ledge, balcony and private enclosed space (PES), strata void (where applicable).
- The above plans and illustrations are subject to change as maybe required or approved by the relevant authorities.
- All floor areas are approximate only and subject to final survey.
- Please refer to the key plan for orientation.
- High volume space in (pd) unit does not constitute strata area.
- Service voids are excluded from strata area.
- RC ledge and / or RC trellis are excluded from strata area.

0 1 2 3 5M

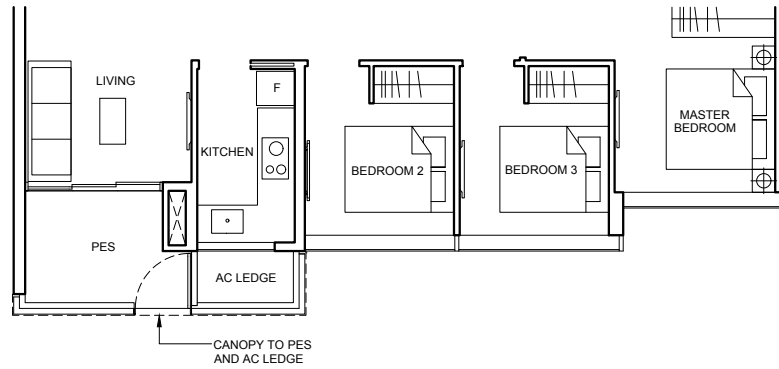


3 BEDROOM DELUXE

Type C1a1(pd)

88 sqm (947 sqft)

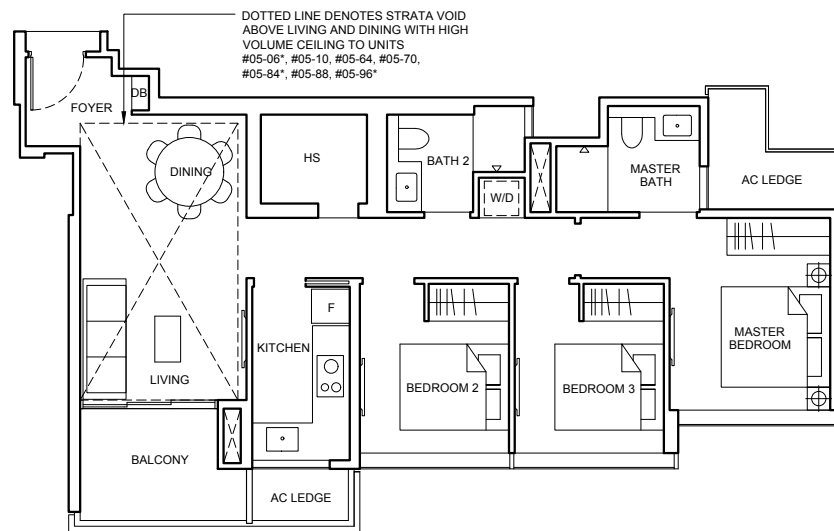
- | | |
|----------------------------|-----------------------------|
| Block 32A
#01-10 | MIRRORED |
| Block 36A
#01-64 | Block 38A
#01-84* |
| Block 36B
#01-70 | Block 40
#01-96* |
| Block 38B
#01-88 | |



Type C1a1

88 sqm (947 sqft)

- | | |
|--------------------------------------|--|
| Block 32A
#02-10 To #04-10 | MIRRORED |
| Block 36A
#02-64 To #04-64 | Block 32
#02-06* To #04-06* |
| Block 36B
#02-70 To #04-70 | Block 38A
#02-84* To #04-84* |
| Block 38B
#02-88 To #04-88 | Block 40
#02-96* To #04-96* |



Type C1a1(PH)

104 sqm (1119 sqft)

Strata void area of 16 sqm / 172 sqft above living and dining with high volume ceiling of 4590mm H.

Balcony at top floor is provided with canopy.

- | | |
|----------------------------|-----------------------------|
| Block 32A
#05-10 | MIRRORED |
| Block 36A
#05-64 | Block 32
#05-06* |
| Block 36B
#05-70 | Block 38A
#05-84* |
| Block 38B
#05-88 | Block 40
#05-96* |

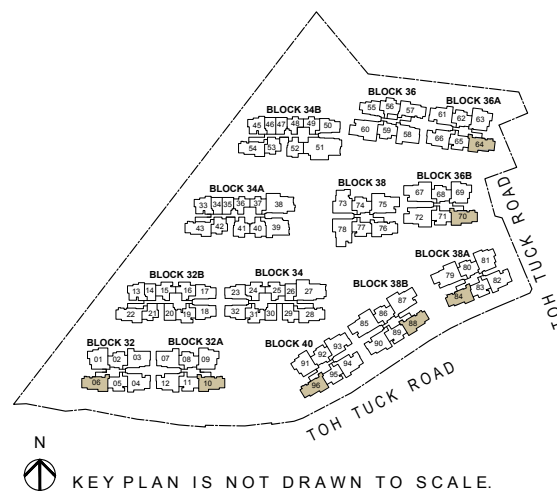
LEGEND

- [W/D] WASHER CUM DRYER [F] FRIDGE

Note

- Area includes AC ledge, balcony and private enclosed space (PES), strata void (where applicable).
- The above plans and illustrations are subject to change as maybe required or approved by the relevant authorities.
- All floor areas are approximate only and subject to final survey.
- Please refer to the key plan for orientation.
- High volume space in (pd) unit does not constitute strata area.
- Service voids are excluded from strata area.
- RC ledge and / or RC trellis are excluded from strata area.

0 1 2 3 5M

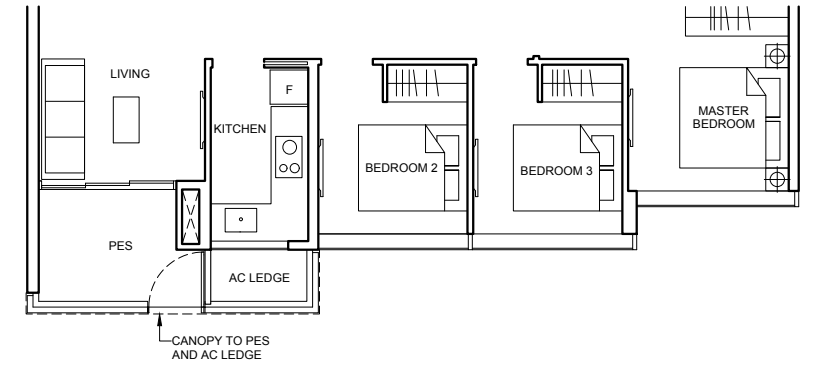


3 BEDROOM DELUXE

Type C1a2(pd)

88 sqm (947 sqft)

- | | |
|---------------------------|----------------------------|
| Block 38
#01-76 | MIRRORED |
| | Block 36
#01-57* |



Type C1a2

88 sqm (947 sqft)

- | | |
|-------------------------------------|---------------------------------------|
| Block 38
#02-76 To #04-76 | MIRRORED |
| | Block 36
#02-57* To #04-57* |

Type C1a2(PH)

104 sqm (1119 sqft)

Strata void area of 16 sqm / 172 sqft above living and dining with high volume ceiling of 4590mm H.

Balcony at top floor is provided with canopy.

- | | |
|---------------------------|----------------------------|
| Block 38
#05-76 | MIRRORED |
| | Block 36
#05-57* |

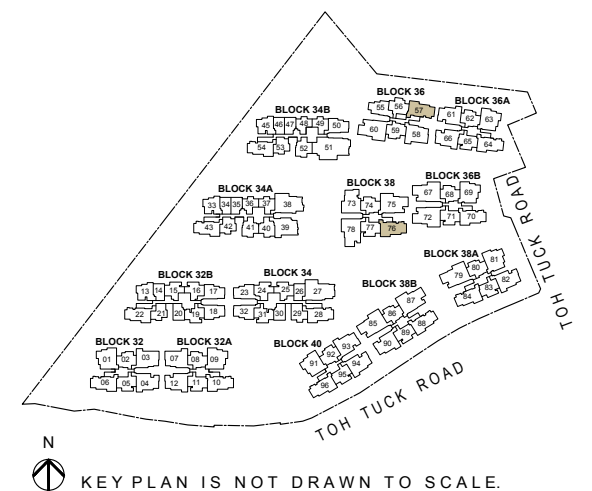
LEGEND

- [W/D] WASHER CUM DRYER [F] FRIDGE

Note

- Area includes AC ledge, balcony and private enclosed space (PES), strata void (where applicable).
- The above plans and illustrations are subject to change as maybe required or approved by the relevant authorities.
- All floor areas are approximate only and subject to final survey.
- Please refer to the key plan for orientation.
- High volume space in (pd) unit does not constitute strata area.
- Service voids are excluded from strata area.
- RC ledge and / or RC trellis are excluded from strata area.

0 1 2 3 5M



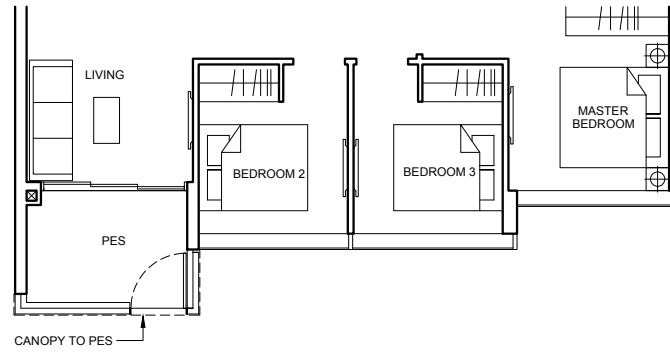
3 BEDROOM DELUXE

Type C1b(pd)

91 sqm (980 sqft)

Block 36A
#01-61
Block 38A
#01-82
Block 40
#01-94

MIRRORED
Block 32A
#01-12*
Block 36A
#01-66*
Block 38B
#01-90*
Block 40
#01-93*

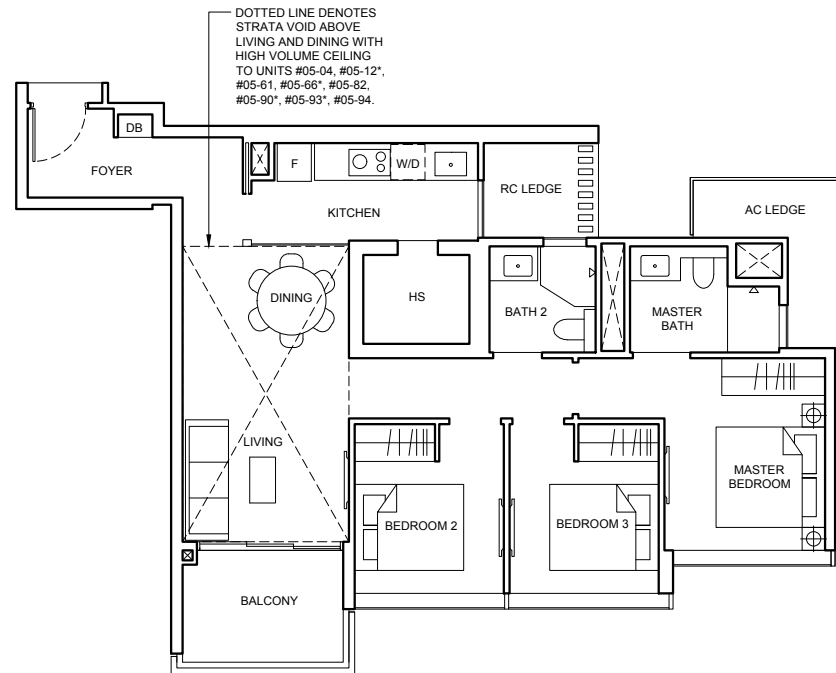


Type C1b

91 sqm (980 sqft)

Block 32
#02-04 To #04-04
Block 36A
#02-61 To #04-61
Block 38A
#02-82 To #04-82
Block 40
#02-94 To #04-94

MIRRORED
Block 32A
#02-12* To #04-12*
Block 36A
#02-66* To #04-66*
Block 38B
#02-90* To #04-90*
Block 40
#02-93* To #04-93*



Type C1b(PH)

108 sqm (1163 sqft)

Strata void area of 17 sqm / 183 sqft above living and dining with high volume ceiling of 4590mm H.

Balcony at top floor is provided with canopy.

MIRRORED
Block 32A
#05-12*
Block 36A
#05-66*
Block 38B
#05-90*
Block 40
#05-93*

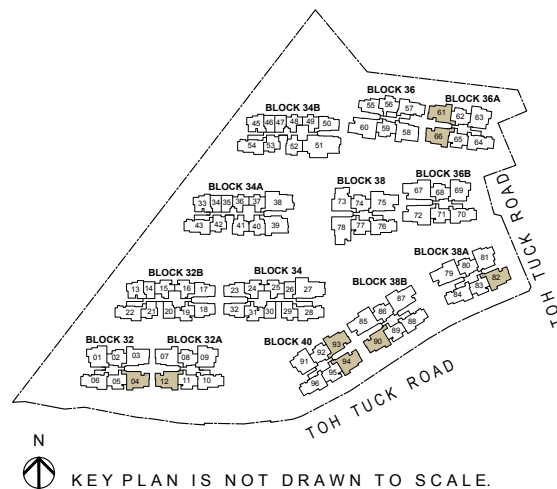
LEGEND

[W/D] WASHER CUM DRYER [F] FRIDGE

Note

- Area includes AC ledge, balcony and private enclosed space (PES), strata void (where applicable).
- The above plans and illustrations are subject to change as maybe required or approved by the relevant authorities.
- All floor areas are approximate only and subject to final survey.
- Please refer to the key plan for orientation.
- High volume space in (pd) unit does not constitute strata area.
- Service voids are excluded from strata area.
- RC ledge and / or RC trellis are excluded from strata area.

0 1 2 3 5M



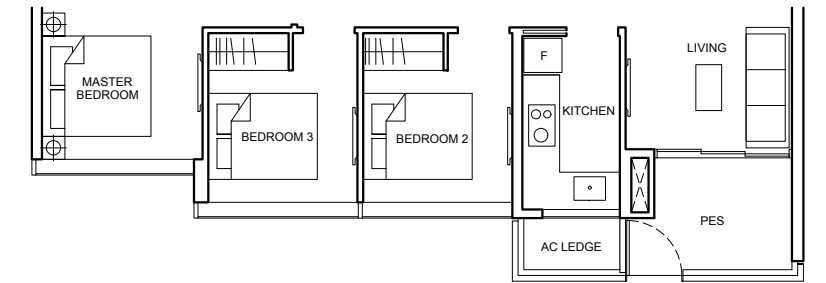
KEY PLAN IS NOT DRAWN TO SCALE.

3 BEDROOM DELUXE

Type C1c(p)

90 sqm (969 sqft)

Block 34A
#01-43
Block 34B
#01-54



Type C1c

90 sqm (969 sqft)

Block 34A
#02-43 To #08-43
Block 34B
#02-54 To #08-54

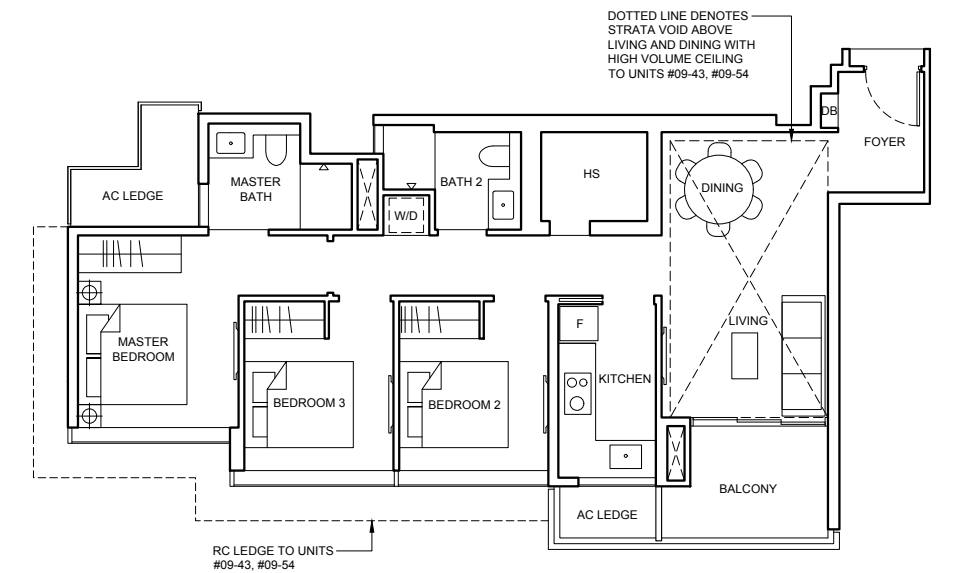
Type C1c(PH)

106 sqm (1141 sqft)

Strata void area of 16 sqm / 172 sqft above living and dining with high volume ceiling of 4415mm H.

Balcony at top floor is provided with canopy.

Block 34A
#09-43
Block 34B
#09-54



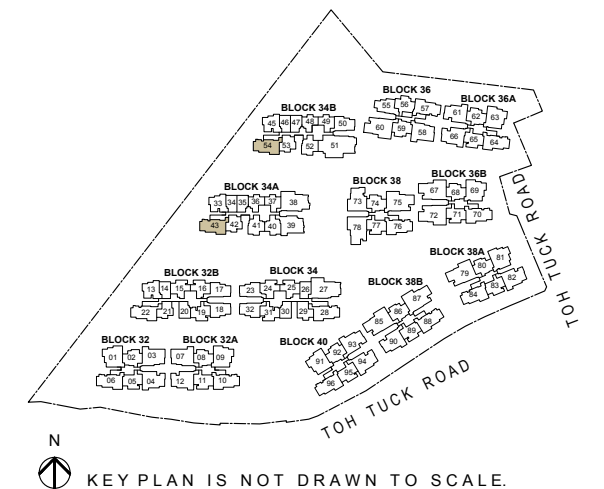
LEGEND

[W/D] WASHER CUM DRYER [F] FRIDGE

Note

- Area includes AC ledge, balcony and private enclosed space (PES), strata void (where applicable).
- The above plans and illustrations are subject to change as maybe required or approved by the relevant authorities.
- All floor areas are approximate only and subject to final survey.
- Please refer to the key plan for orientation.
- High volume space in (pd) unit does not constitute strata area.
- Service voids are excluded from strata area.
- RC ledge and / or RC trellis are excluded from strata area.

0 1 2 3 5M



KEY PLAN IS NOT DRAWN TO SCALE.

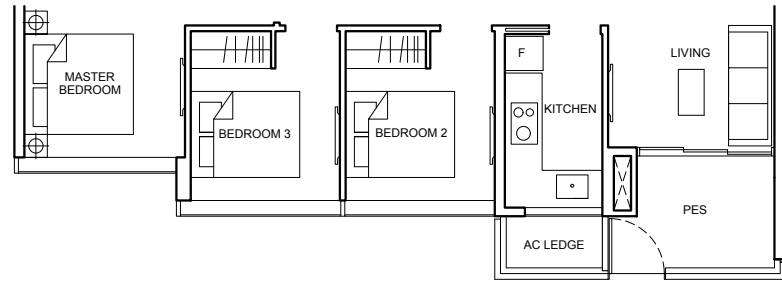
3 BEDROOM DELUXE

Type C1d(p)

91 sqm (980 sqft)

Block 32B
#01-22

MIRRORED
Block 34
#01-28*



Type C1d

91 sqm (980 sqft)

Block 32B
#02-22 To #08-22

MIRRORED
Block 34
#02-28* To #09-28*

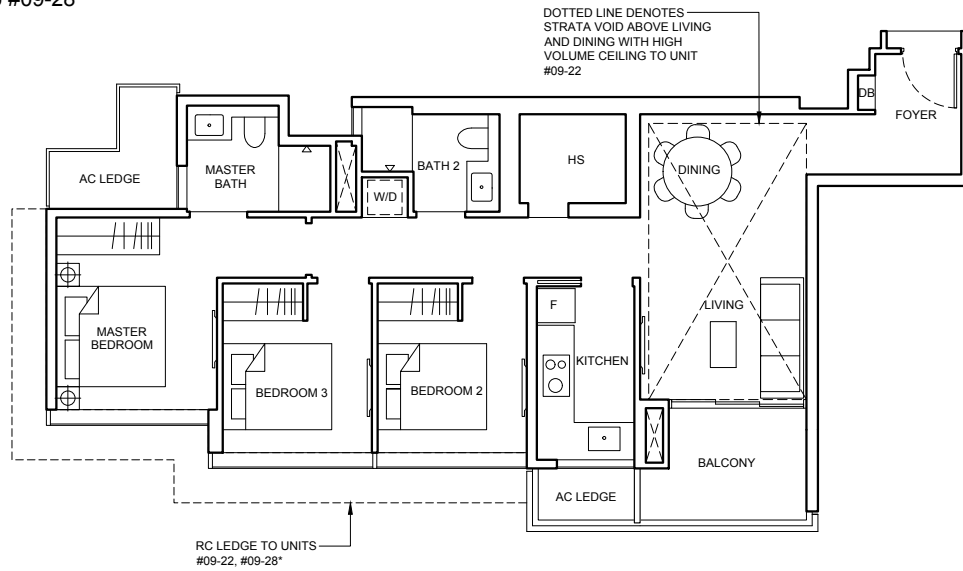
Type C1d(PH)

107 sqm (1152 sqft)

Strata void area of 16 sqm / 172 sqft above living and dining with high volume ceiling of 4415mm H.

Balcony at top floor is provided with canopy.

Block 32B
#09-22

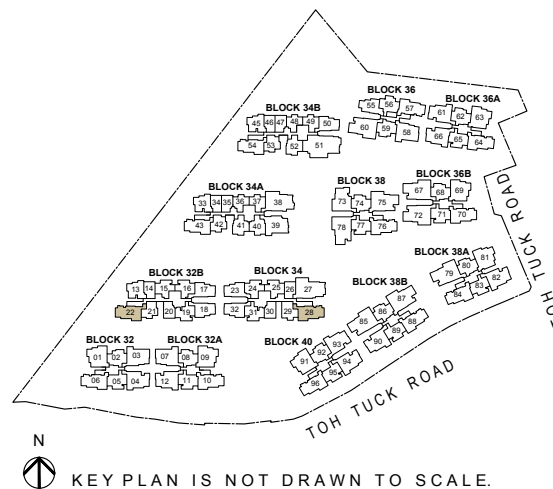


LEGEND

W/D WASHER CUM DRYER F FRIDGE

Note

- Area includes AC ledge, balcony and private enclosed space (PES), strata void (where applicable).
- The above plans and illustrations are subject to change as maybe required or approved by the relevant authorities.
- All floor areas are approximate only and subject to final survey.
- Please refer to the key plan for orientation.
- High volume space in (pd) unit does not constitute strata area.
- Service voids are excluded from strata area.
- RC ledge and / or RC trellis are excluded from strata area.



KEY PLAN IS NOT DRAWN TO SCALE.

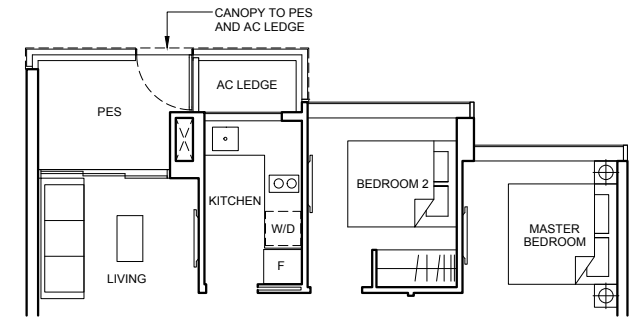
3 BEDROOM DUAL KEY

Type C2(DK)(pd)

96 sqm (1033 sqft)

Block 36A
#01-63
Block 36B
#01-69
Block 38A
#01-81

MIRRORED
Block 32
#01-01*
Block 40
#01-91*



Type C2(DK)

96 sqm (1033 sqft)

Block 32A
#02-09 To #04-09
Block 36A
#02-63 To #04-63
Block 36B
#02-69 To #04-69
Block 38A
#02-81 To #04-81

MIRRORED
Block 32
#02-01* To #04-01*
Block 40
#02-91* To #04-91*

Type C2(DK)(PH)

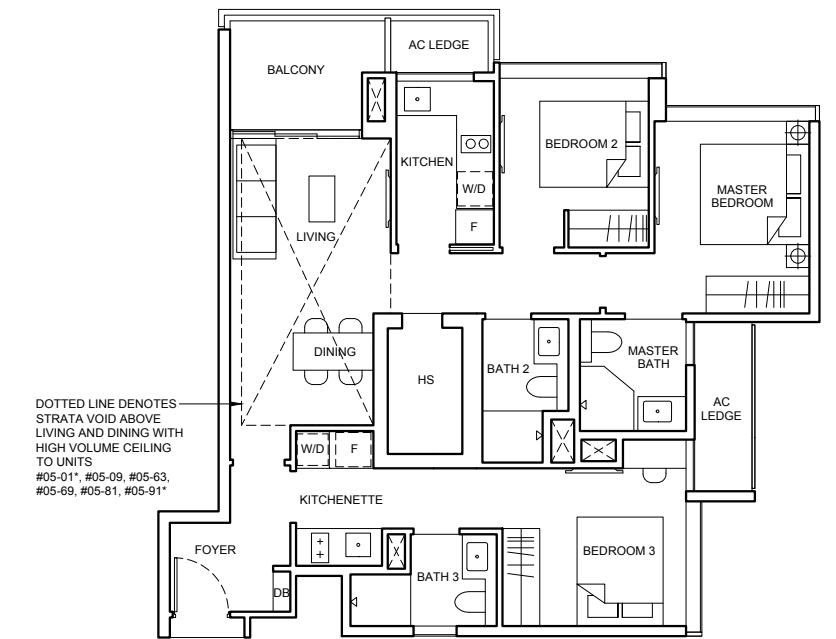
111 sqm (1195 sqft)

Strata void area of 15 sqm / 162 sqft above living and dining with high volume ceiling of 4590mm H.

Balcony at top floor is provided with canopy.

Block 32A
#05-09
Block 36A
#05-63
Block 36B
#05-69
Block 38A
#05-81

MIRRORED
Block 32
#05-01*
Block 40
#05-91*

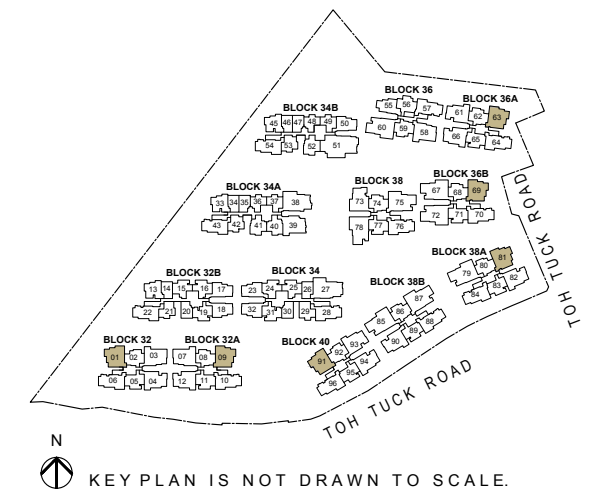


LEGEND

W/D WASHER CUM DRYER F INTEGRATED FRIDGE F FRIDGE

Note

- Area includes AC ledge, balcony and private enclosed space (PES), strata void (where applicable).
- The above plans and illustrations are subject to change as maybe required or approved by the relevant authorities.
- All floor areas are approximate only and subject to final survey.
- Please refer to the key plan for orientation.
- High volume space in (pd) unit does not constitute strata area.
- Service voids are excluded from strata area.
- RC ledge and / or RC trellis are excluded from strata area.

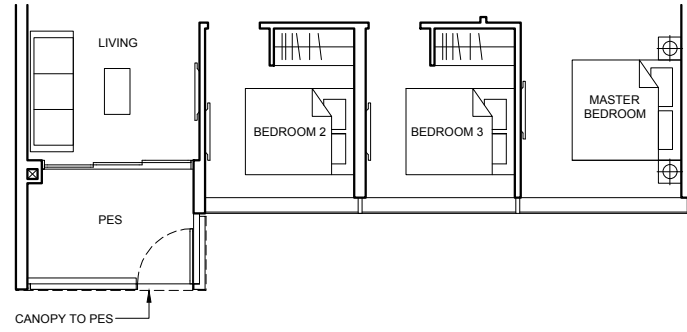


KEY PLAN IS NOT DRAWN TO SCALE.

3 BEDROOM PREMIUM

Type C3a(pd) 98 sqm (1055 sqft)

Block 36
#01-58



Type C3a 98 sqm (1055 sqft)

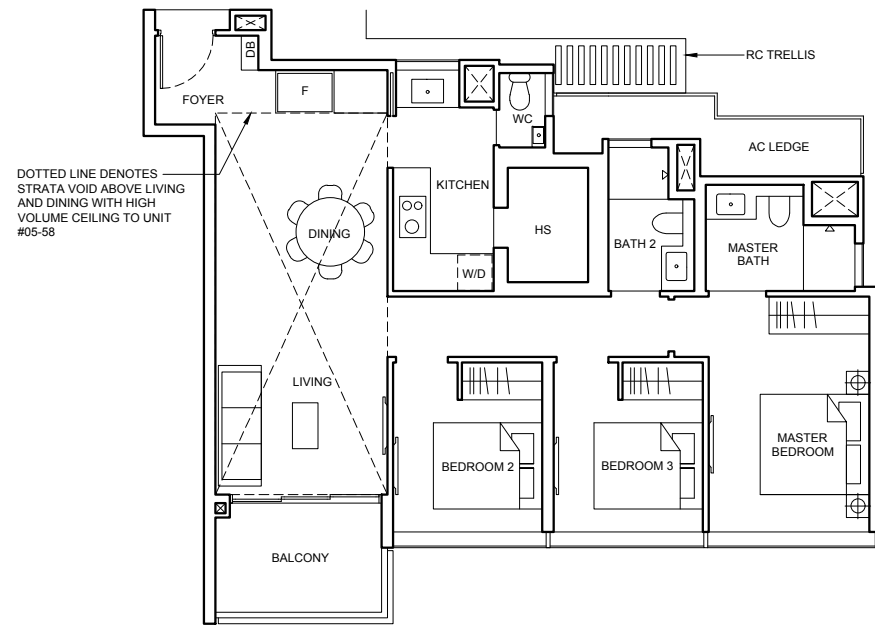
Block 36
#02-58 To #04-58

Type C3a(PH) 121 sqm (1302 sqft)

Strata void area of 23 sqm / 247 sqft above living and dining with high volume ceiling of 4590mm H.

Balcony at top floor is provided with canopy.

Block 36
#05-58



DOTTED LINE DENOTES STRATA VOID ABOVE LIVING AND DINING WITH HIGH VOLUME CEILING TO UNIT #05-58

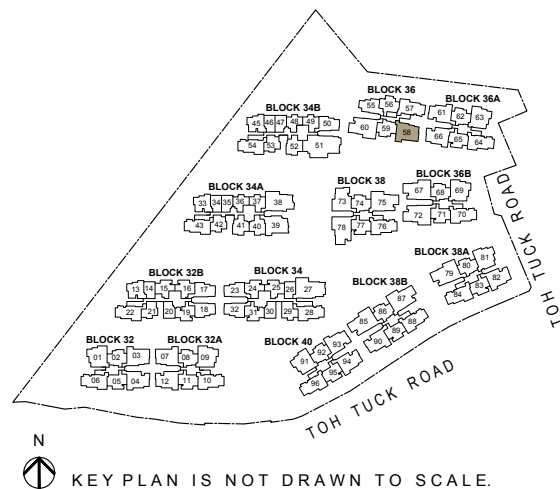
LEGEND

W/D WASHER CUM DRYER F FRIDGE

Note

- Area includes AC ledge, balcony and private enclosed space (PES), strata void (where applicable).
- The above plans and illustrations are subject to change as maybe required or approved by the relevant authorities.
- All floor areas are approximate only and subject to final survey.
- Please refer to the key plan for orientation.
- High volume space in (pd) unit does not constitute strata area.
- Service voids are excluded from strata area.
- RC ledge and / or RC trellis are excluded from strata area.

0 1 2 3 5M

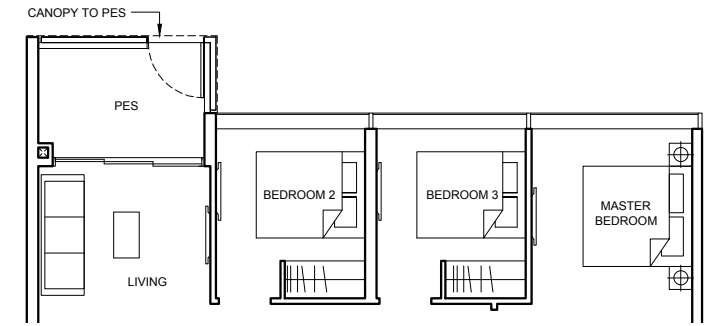


N KEY PLAN IS NOT DRAWN TO SCALE.

3 BEDROOM PREMIUM

Type C3b(pd) 100 sqm (1076 sqft)

Block 32
#01-03



Type C3b 100 sqm (1076 sqft)

Block 32
#02-03 To #04-03

MIRRORED
Block 32A
#02-07* To #04-07*

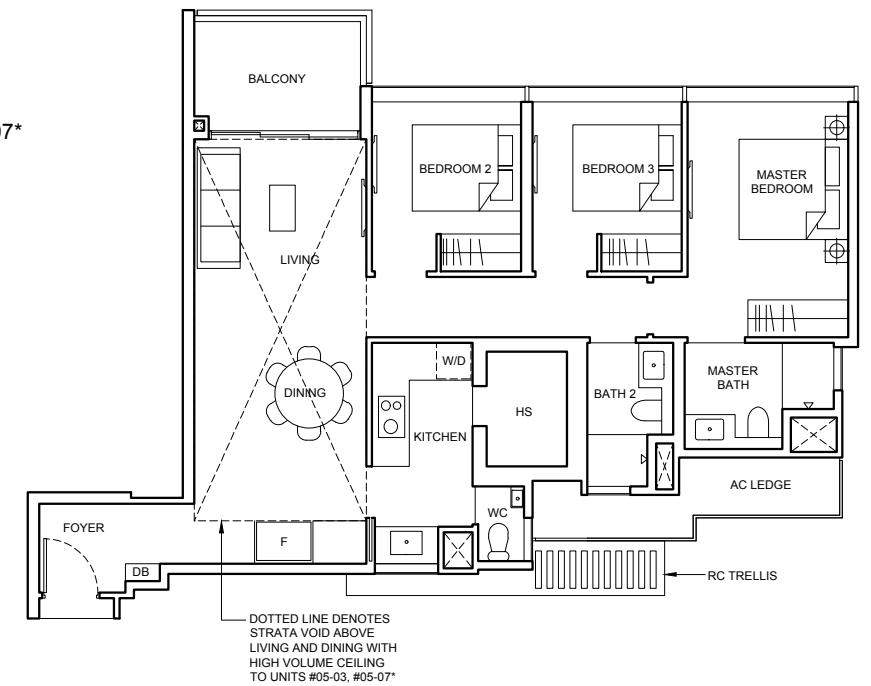
Type C3b(PH) 123 sqm (1324 sqft)

Strata void area of 23 sqm / 248 sqft above living and dining with high volume ceiling of 4590mm H.

Balcony at top floor is provided with canopy.

Block 32
#05-03

MIRRORED
Block 32A
#05-07*



DOTTED LINE DENOTES STRATA VOID ABOVE LIVING AND DINING WITH HIGH VOLUME CEILING TO UNITS #05-03, #05-07*

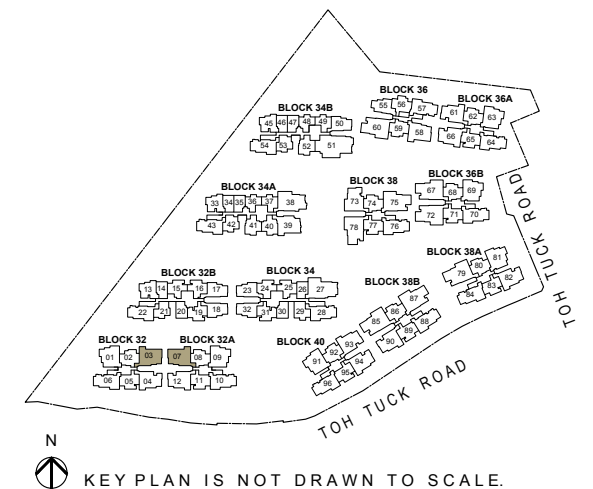
LEGEND

W/D WASHER CUM DRYER F FRIDGE

Note

- Area includes AC ledge, balcony and private enclosed space (PES), strata void (where applicable).
- The above plans and illustrations are subject to change as maybe required or approved by the relevant authorities.
- All floor areas are approximate only and subject to final survey.
- Please refer to the key plan for orientation.
- High volume space in (pd) unit does not constitute strata area.
- Service voids are excluded from strata area.
- RC ledge and / or RC trellis are excluded from strata area.

0 1 2 3 5M

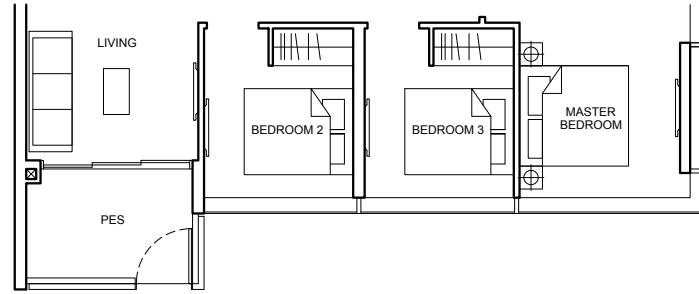


N KEY PLAN IS NOT DRAWN TO SCALE.

3 BEDROOM PREMIUM

Type C3c(p) 101 sqm (1087 sqft)

Block 34A
#01-39



Type C3c 101 sqm (1087 sqft)

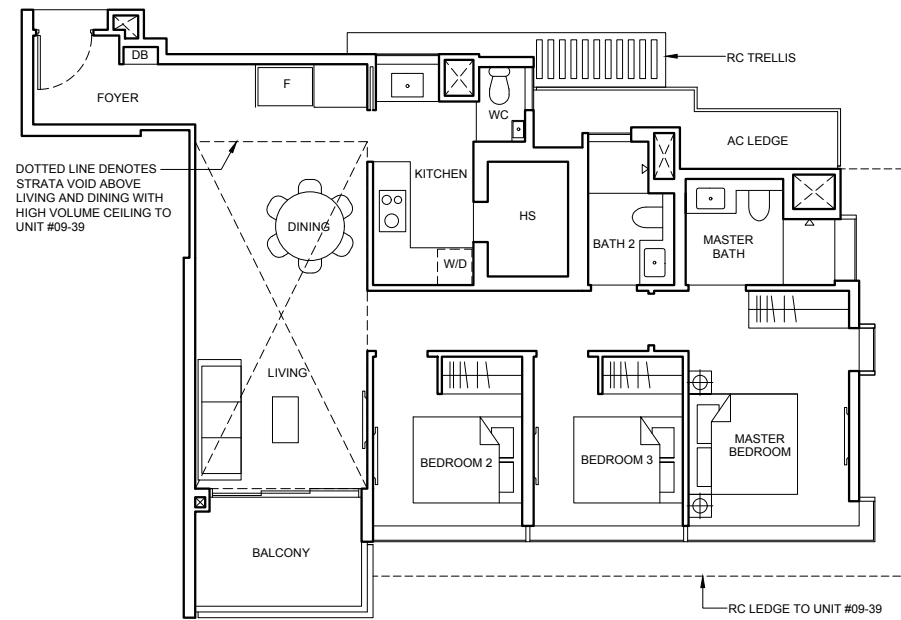
Block 34A
#02-39 To #08-39

Type C3c(PH) 122 sqm (1313 sqft)

Strata void area of 21 sqm / 226 sqft above living and dining with high volume ceiling of 4415mm H.

Balcony at top floor is provided with canopy.

Block 34A
#09-39



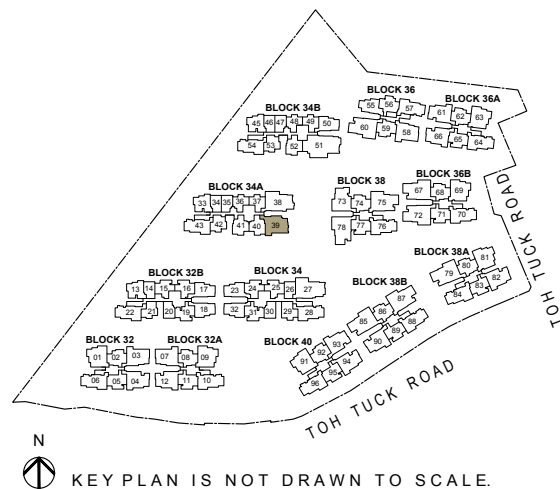
LEGEND

W/D | WASHER CUM DRYER F | FRIDGE

Note

- Area includes AC ledge, balcony and private enclosed space (PES), strata void (where applicable).
- The above plans and illustrations are subject to change as maybe required or approved by the relevant authorities.
- All floor areas are approximate only and subject to final survey.
- Please refer to the key plan for orientation.
- High volume space in (pd) unit does not constitute strata area.
- Service voids are excluded from strata area.
- RC ledge and / or RC trellis are excluded from strata area.

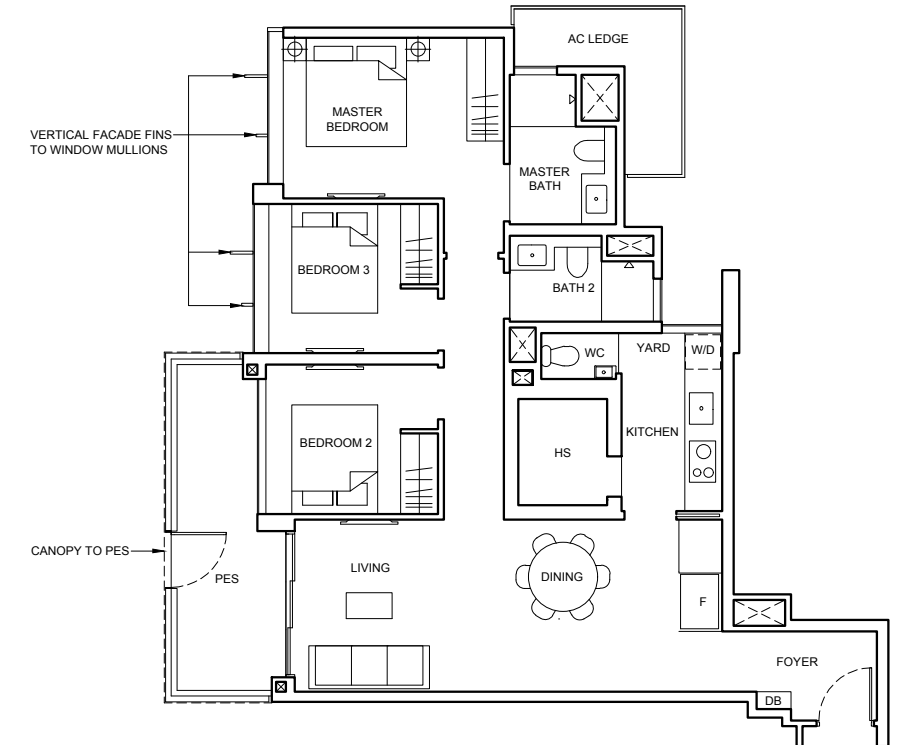
0 1 2 3 5M



3 BEDROOM PREMIUM

Type C4(pd) 103 sqm (1109 sqft)

Block 38
#01-73



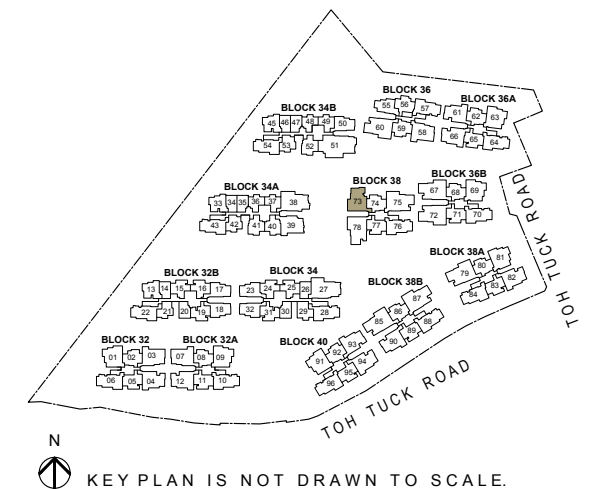
LEGEND

W/D | WASHER CUM DRYER F | FRIDGE

Note

- Area includes AC ledge, balcony and private enclosed space (PES), strata void (where applicable).
- The above plans and illustrations are subject to change as maybe required or approved by the relevant authorities.
- All floor areas are approximate only and subject to final survey.
- Please refer to the key plan for orientation.
- High volume space in (pd) unit does not constitute strata area.
- Service voids are excluded from strata area.
- RC ledge and / or RC trellis are excluded from strata area.

0 1 2 3 5M



3 BEDROOM PREMIUM

Type C4

103 sqm (1109 sqft)

Block 38

#02-73 To #04-73

Type C4(PH)

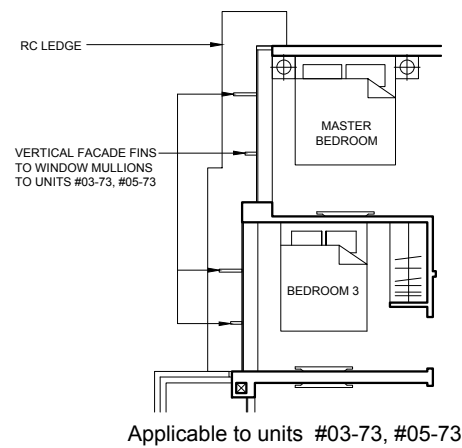
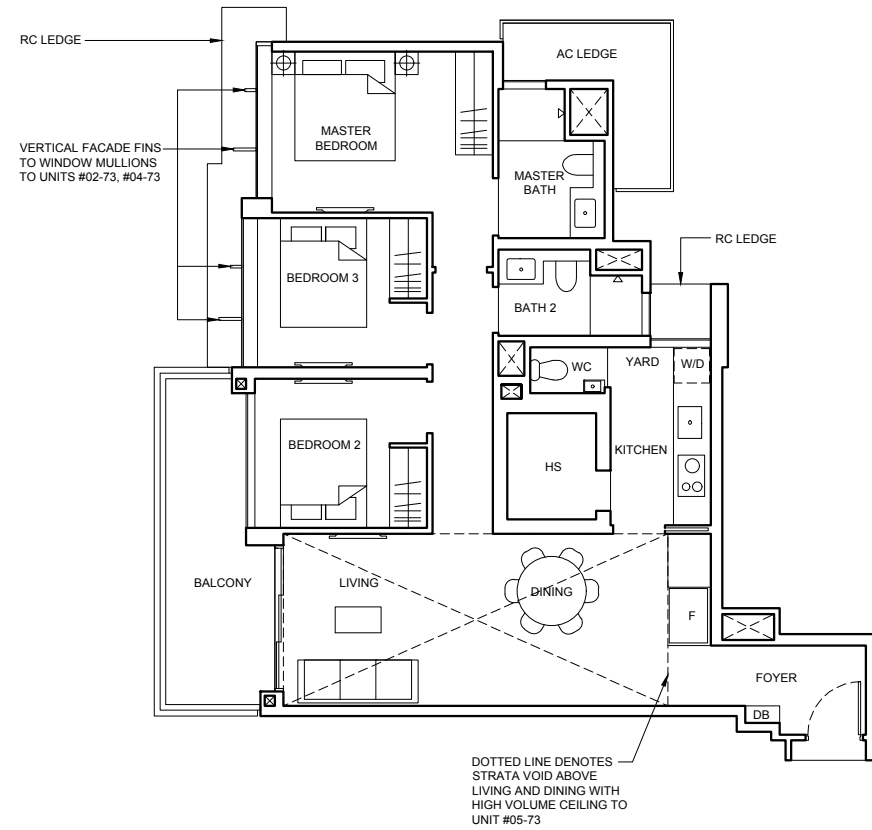
126 sqm (1356 sqft)

Strata void area of 23 sqm / 247 sqft above living and dining with high volume ceiling of 4590mm H.

Balcony at top floor is provided with canopy.

Block 38

#05-73



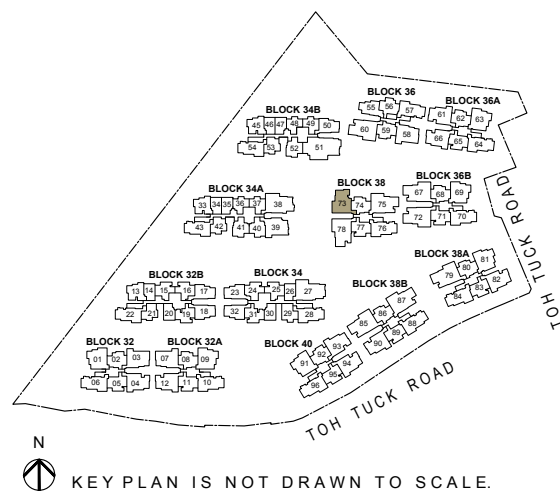
LEGEND

[W/D] WASHER CUM DRYER [F] FRIDGE

Note

- Area includes AC ledge, balcony and private enclosed space (PES), strata void (where applicable).
- The above plans and illustrations are subject to change as maybe required or approved by the relevant authorities.
- All floor areas are approximate only and subject to final survey.
- Please refer to the key plan for orientation.
- High volume space in (pd) unit does not constitute strata area.
- Service voids are excluded from strata area.
- RC ledge and / or RC trellis are excluded from strata area.

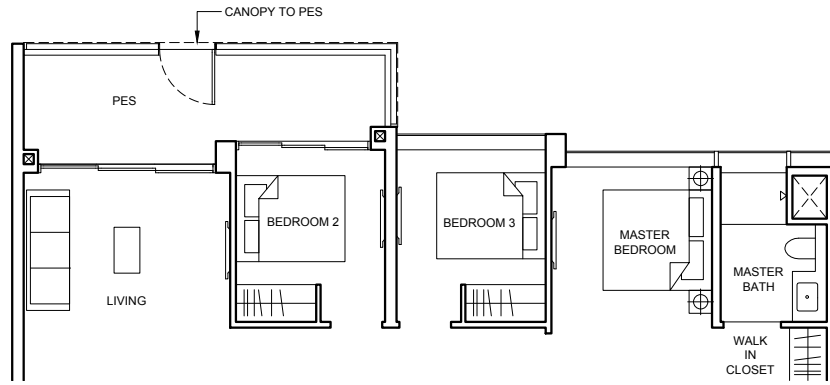
0 1 2 3 5M



4 BEDROOM PREMIUM

Type D1a(pd) 119 sqm (1281 sqft)

Block 38
#01-75
Block 38B
#01-87

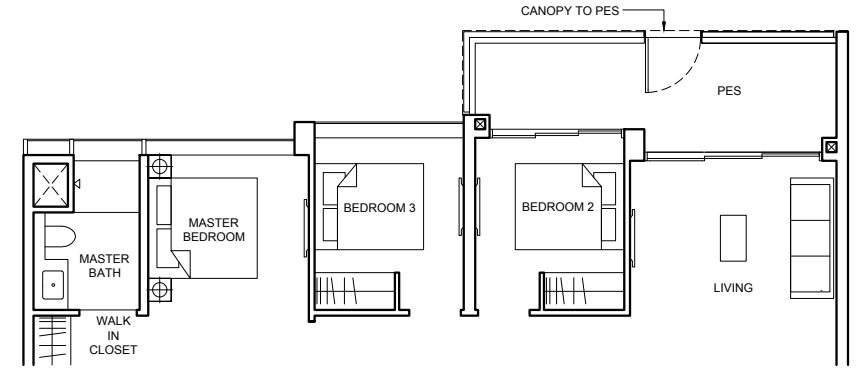


4 BEDROOM PREMIUM

Type D1b(pd) 121 sqm (1302 sqft)

Block 36B
#01-67
Block 38A
#01-79
Block 38B
#01-85

MIRRORED
Block 36
#01-60*
Block 36B
#01-72*



Type D1a 119 sqm (1281 sqft)

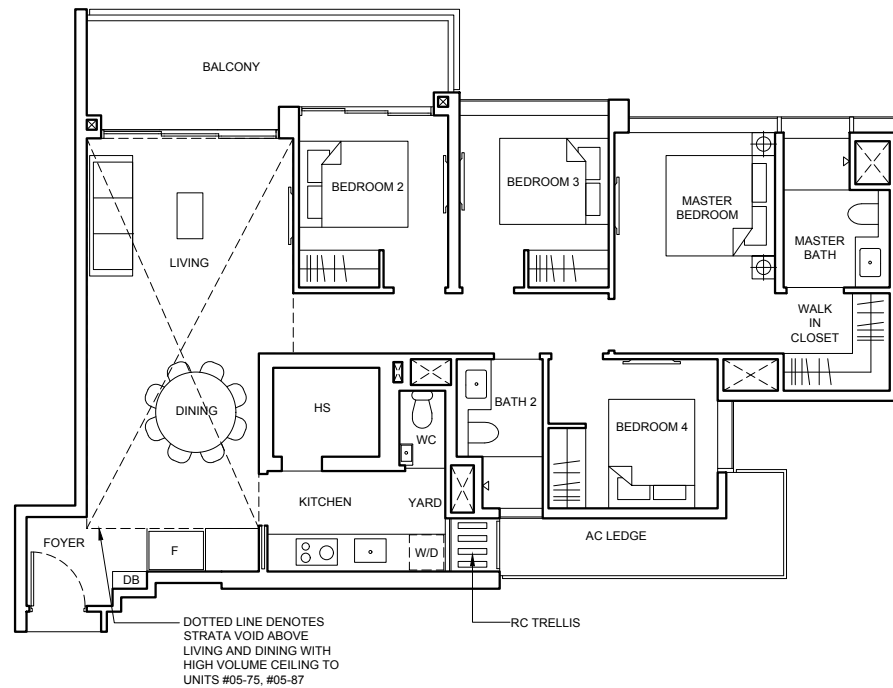
Block 38
#02-75 To #04-75
Block 38B
#02-87 To #04-87

Type D1a(PH) 145 sqm (1561 sqft)

Strata void area of 26 sqm / 280 sqft above living and dining with high volume ceiling of 4590mm H.

Balcony at top floor is provided with canopy.

Block 38
#05-75
Block 38B
#05-87



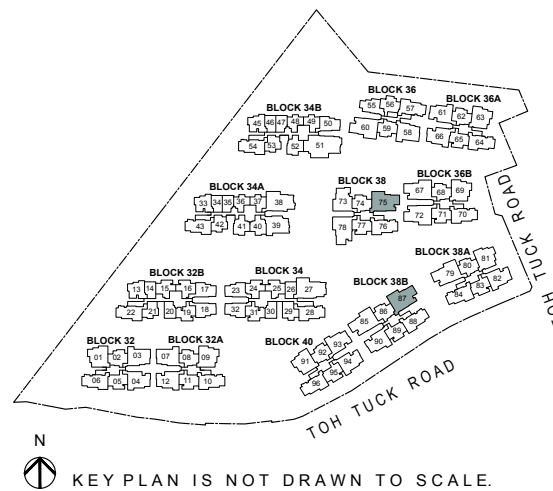
LEGEND

W/D | WASHER CUM DRYER | F | FRIDGE

Note

- Area includes AC ledge, balcony and private enclosed space (PES), strata void (where applicable).
- The above plans and illustrations are subject to change as maybe required or approved by the relevant authorities.
- All floor areas are approximate only and subject to final survey.
- Please refer to the key plan for orientation.
- High volume space in (pd) unit does not constitute strata area.
- Service voids are excluded from strata area.
- RC ledge and / or RC trellis are excluded from strata area.

0 1 2 3 5M



Type D1b 121 sqm (1302 sqft)

Block 36B
#02-67 To #04-67
Block 38A
#02-79 To #04-79
Block 38B
#02-85 To #04-85

MIRRORED
Block 36
#02-60* To #04-60*
Block 36B
#02-72* To #04-72*

Type D1b(PH) 147 sqm (1582 sqft)

Strata void area of 26 sqm / 280 sqft above living and dining with high volume ceiling of 4590mm H.

Balcony at top floor is provided with canopy.

Block 36B
#05-67
Block 38A
#05-79
Block 38B
#05-85

MIRRORED
Block 36
#05-60*
Block 36B
#05-72*

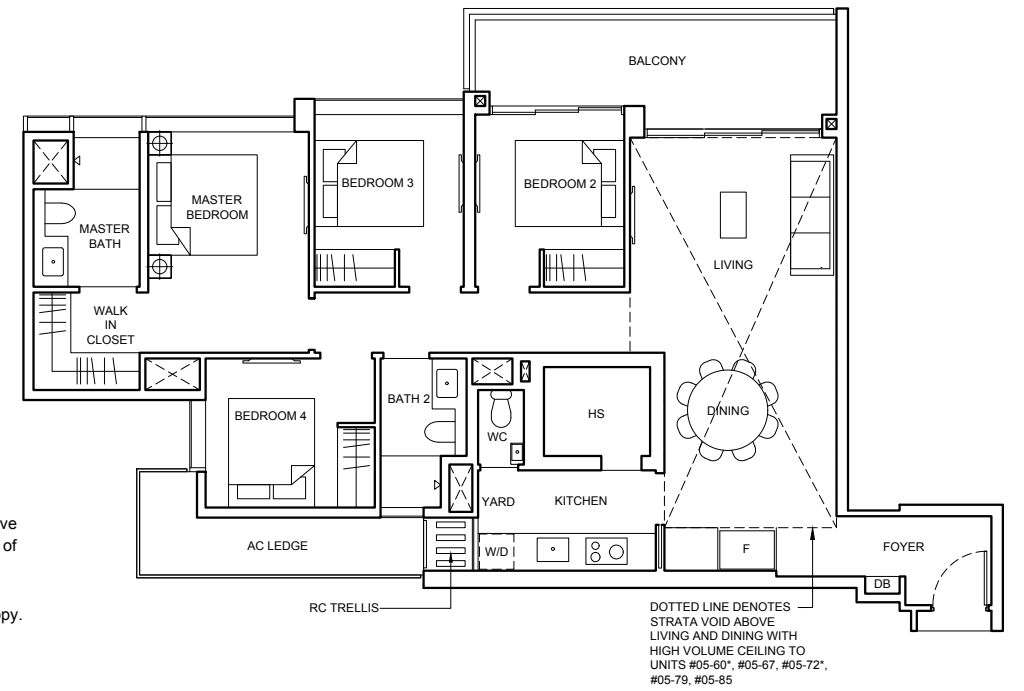
LEGEND

W/D | WASHER CUM DRYER | F | FRIDGE

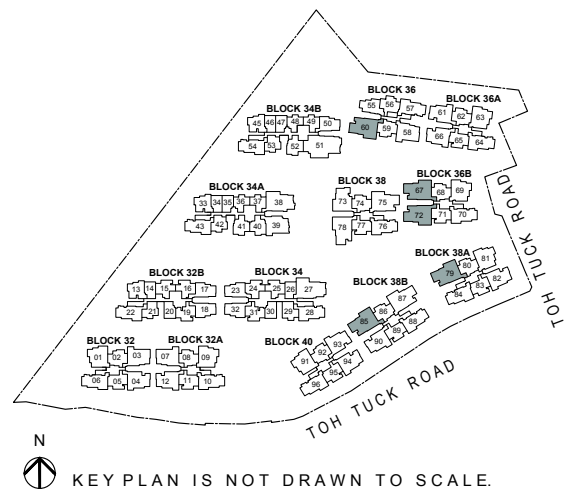
Note

- Area includes AC ledge, balcony and private enclosed space (PES), strata void (where applicable).
- The above plans and illustrations are subject to change as maybe required or approved by the relevant authorities.
- All floor areas are approximate only and subject to final survey.
- Please refer to the key plan for orientation.
- High volume space in (pd) unit does not constitute strata area.
- Service voids are excluded from strata area.
- RC ledge and / or RC trellis are excluded from strata area.

0 1 2 3 5M



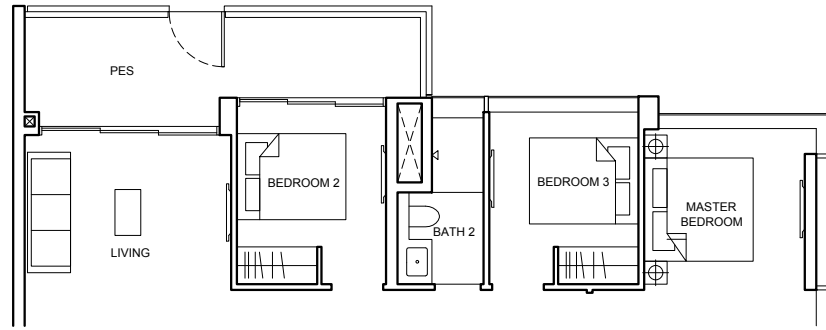
DOTTED LINE DENOTES STRATA VOID ABOVE LIVING AND DINING WITH HIGH VOLUME CEILING TO UNITS #05-60*, #05-67, #05-72*, #05-79, #05-85



4 BEDROOM PREMIUM

Type D1c(p) 126 sqm (1356 sqft)

Block 34A
#01-38



Type D1c 126 sqm (1356 sqft)

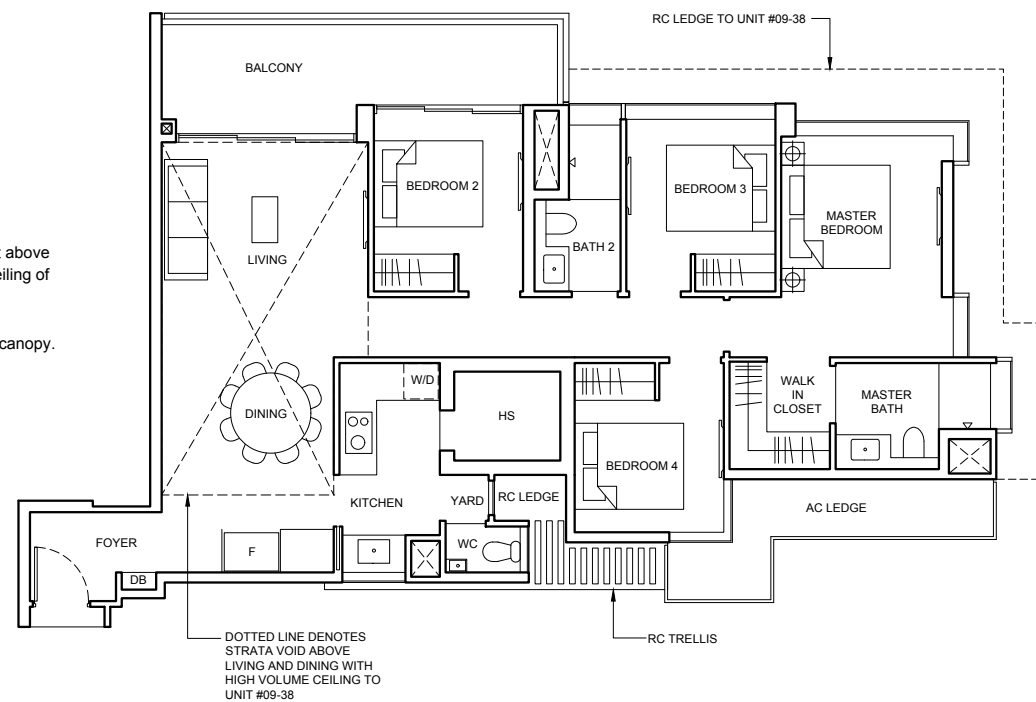
Block 34A
#02-38 To #08-38

Type D1c(PH) 150 sqm (1615 sqft)

Strata void area of 24 sqm / 259 sqft above living and dining with high volume ceiling of 4415mm H.

Balcony at top floor is provided with canopy.

Block 34A
#09-38



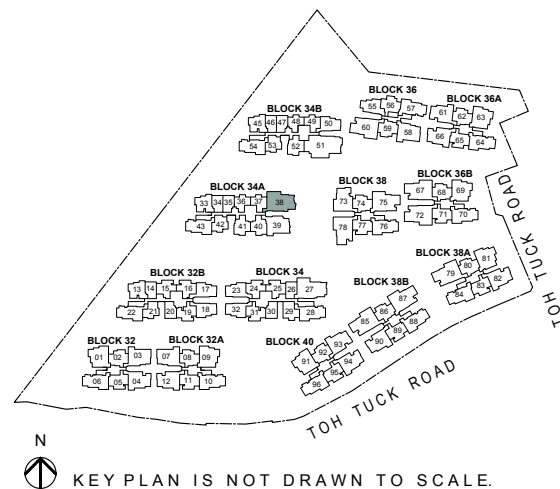
LEGEND

W/D | WASHER CUM DRYER F | FRIDGE

Note

- Area includes AC ledge, balcony and private enclosed space (PES), strata void (where applicable).
- The above plans and illustrations are subject to change as maybe required or approved by the relevant authorities.
- All floor areas are approximate only and subject to final survey.
- Please refer to the key plan for orientation.
- High volume space in (pd) unit does not constitute strata area.
- Service voids are excluded from strata area.
- RC ledge and / or RC trellis are excluded from strata area.

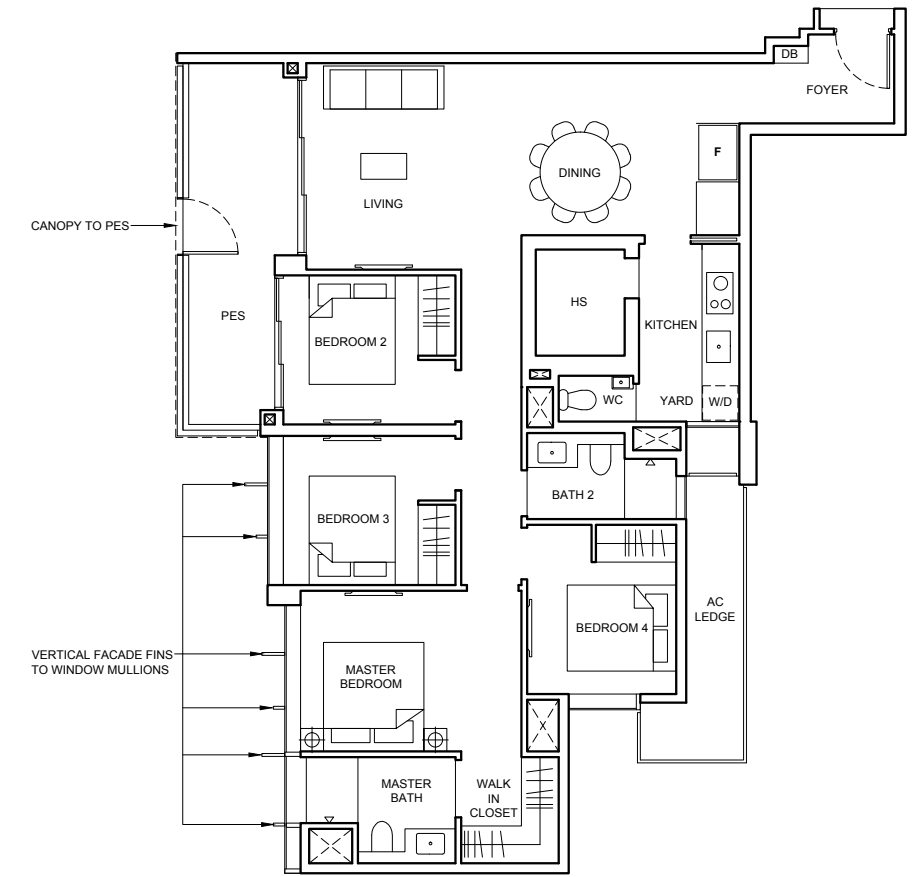
0 1 2 3 5M



4 BEDROOM PREMIUM

Type D2(pd) 121 sqm (1302 sqft)

Block 38
#01-78



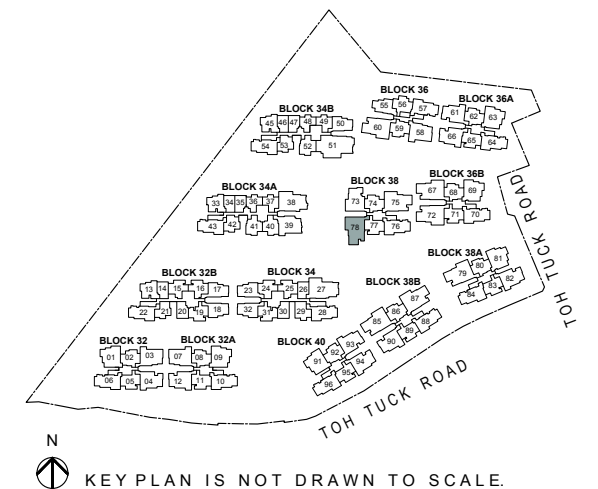
LEGEND

W/D | WASHER CUM DRYER F | FRIDGE

Note

- Area includes AC ledge, balcony and private enclosed space (PES), strata void (where applicable).
- The above plans and illustrations are subject to change as maybe required or approved by the relevant authorities.
- All floor areas are approximate only and subject to final survey.
- Please refer to the key plan for orientation.
- High volume space in (pd) unit does not constitute strata area.
- Service voids are excluded from strata area.
- RC ledge and / or RC trellis are excluded from strata area.

0 1 2 3 5M



4 BEDROOM PREMIUM

Type D2

121 sqm (1302 sqft)

Block 38

#02-78 To #04-78

Type D2(PH)

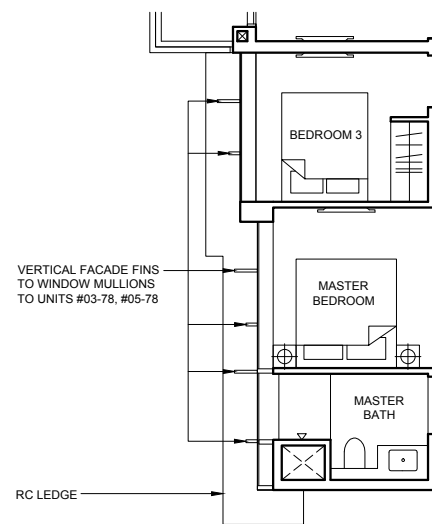
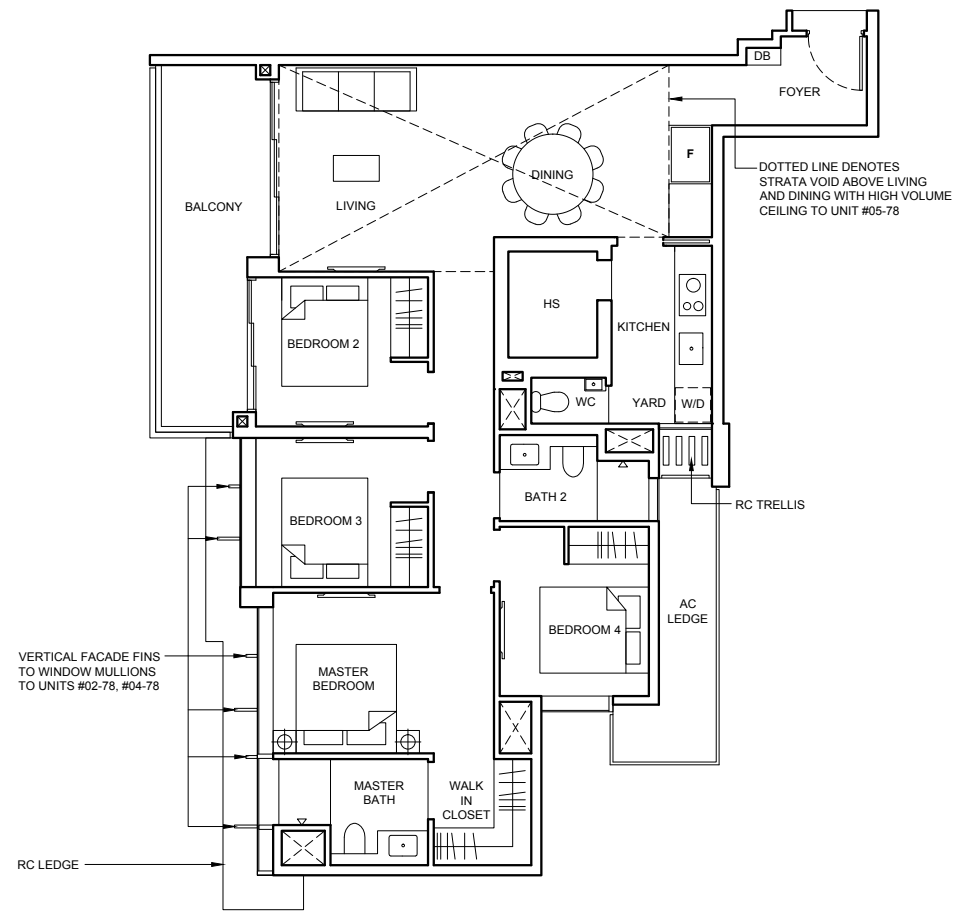
146 sqm (1572 sqft)

Strata void area of 25 sqm / 270 sqft above living and dining with high volume ceiling of 4590mm H.

Balcony at top floor is provided with canopy.

Block 38

#05-78



Applicable to units #03-78, #05-78

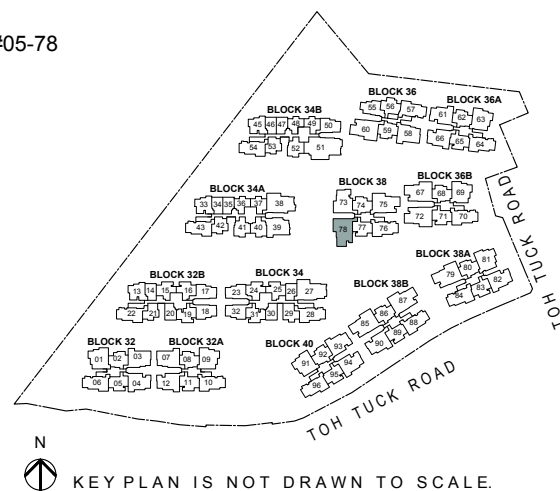
LEGEND

W/D WASHER CUM DRYER F FRIDGE

Note

- Area includes AC ledge, balcony and private enclosed space (PES), strata void (where applicable).
- The above plans and illustrations are subject to change as maybe required or approved by the relevant authorities.
- All floor areas are approximate only and subject to final survey.
- Please refer to the key plan for orientation.
- High volume space in (pd) unit does not constitute strata area.
- Service voids are excluded from strata area.
- RC ledge and / or RC trellis are excluded from strata area.

0 1 2 3 5M



KEY PLAN IS NOT DRAWN TO SCALE.

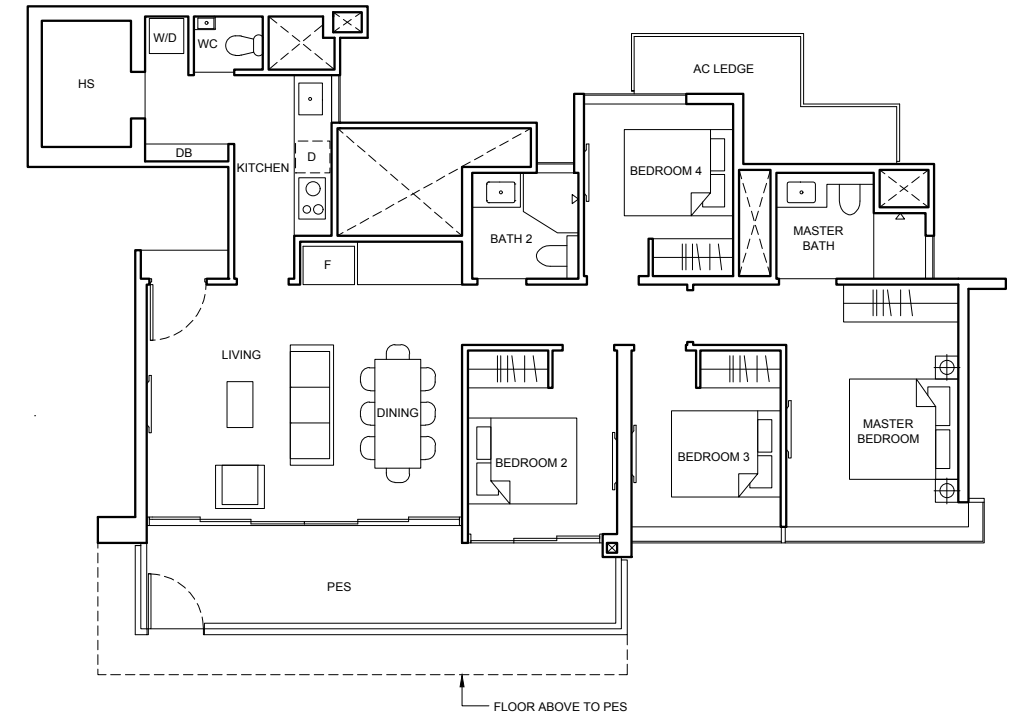
4 BEDROOM PREMIUM

Type D2(p)

122 sqm (1313 sqft)

Block 34B

#01-51



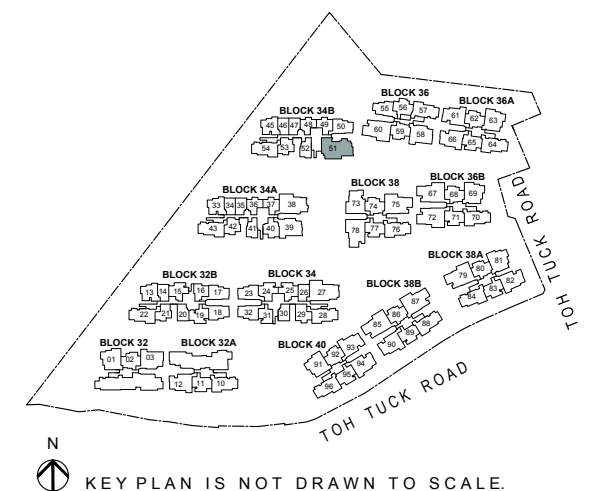
LEGEND

W/D WASHER CUM DRYER F FRIDGE D DISHWASHER

Note

- Area includes AC ledge, balcony and private enclosed space (PES), strata void (where applicable).
- The above plans and illustrations are subject to change as maybe required or approved by the relevant authorities.
- All floor areas are approximate only and subject to final survey.
- Please refer to the key plan for orientation.
- High volume space in (pd) unit does not constitute strata area.
- Service voids are excluded from strata area.
- RC ledge and / or RC trellis are excluded from strata area.

0 1 2 3 5M

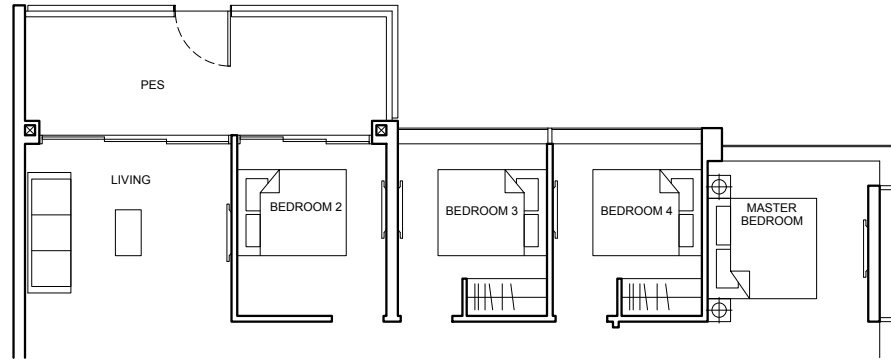


KEY PLAN IS NOT DRAWN TO SCALE.

4 BEDROOM SUITE

Type D3(p)
134 sqm (1442 sqft)

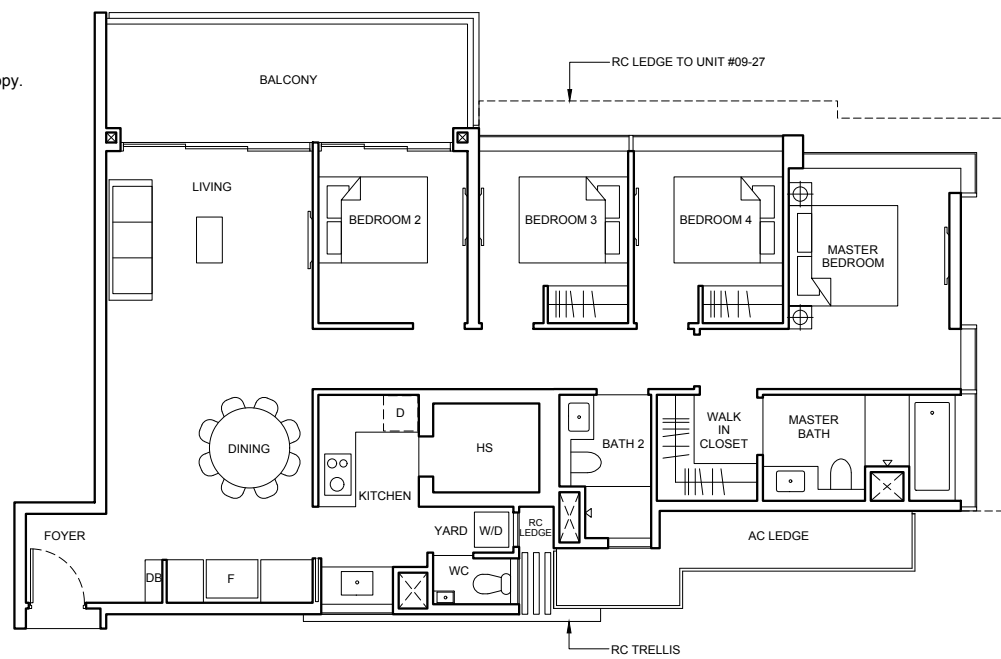
Block 34
#01-27



Type D3
134 sqm (1442 sqft)

Balcony at top floor is provided with canopy.

Block 34
#02-27 To #09-27

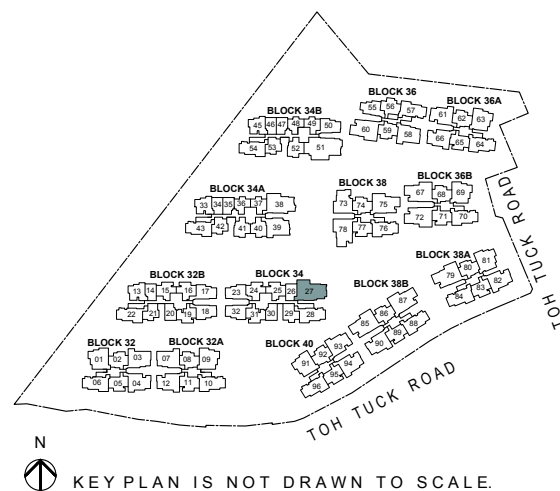


LEGEND

- W/D WASHER CUM DRYER
- F FRIDGE
- D DISHWASHER

Note

- Area includes AC ledge, balcony and private enclosed space (PES), strata void (where applicable).
- The above plans and illustrations are subject to change as maybe required or approved by the relevant authorities.
- All floor areas are approximate only and subject to final survey.
- Please refer to the key plan for orientation.
- High volume space in (pd) unit does not constitute strata area.
- Service voids are excluded from strata area.
- RC ledge and / or RC trellis are excluded from strata area.

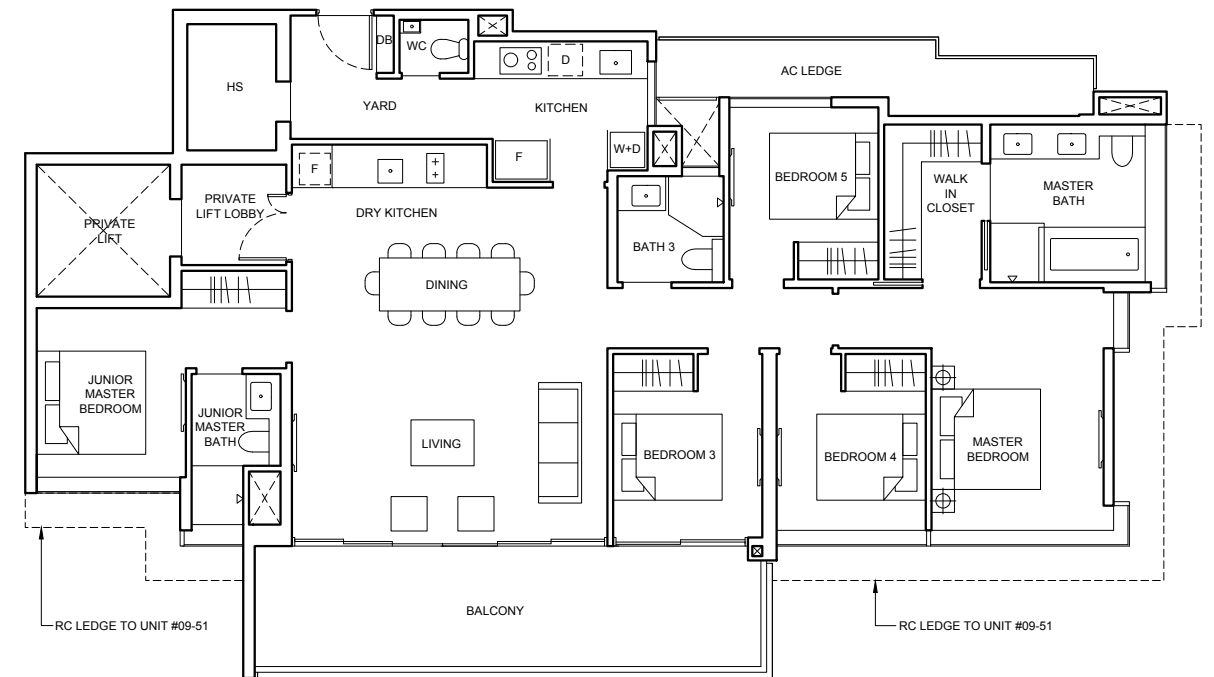


5 BEDROOM SUITE

Type E
175 sqm (1884 sqft)

Balcony at top floor is provided with canopy.

Block 34B
#02-51 To #09-51

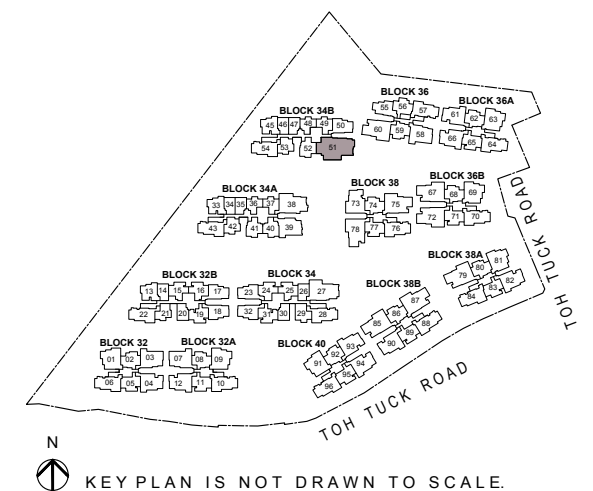


LEGEND

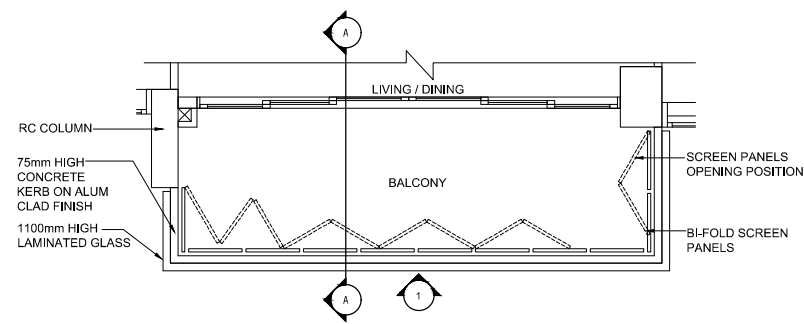
- W+D WASHER AND DRYER
- F INTEGRATED FRIDGE
- F FRIDGE
- D DISHWASHER

Note

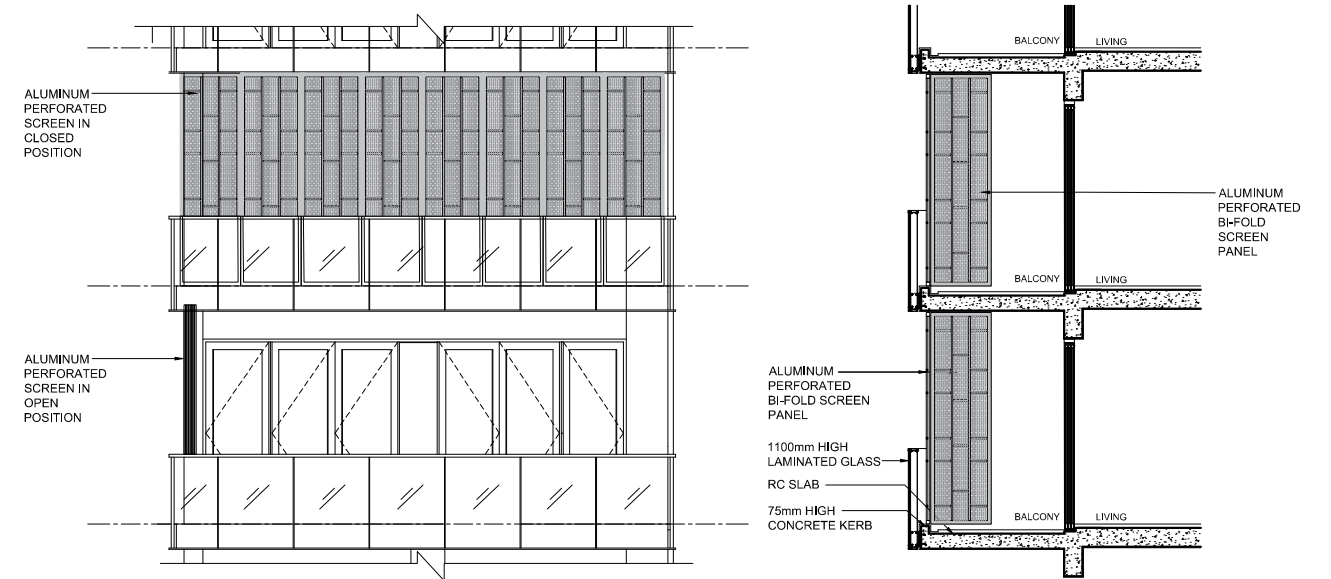
- Area includes AC ledge, balcony and private enclosed space (PES), strata void (where applicable).
- The above plans and illustrations are subject to change as maybe required or approved by the relevant authorities.
- All floor areas are approximate only and subject to final survey.
- Please refer to the key plan for orientation.
- High volume space in (pd) unit does not constitute strata area.
- Service voids are excluded from strata area.
- RC ledge and / or RC trellis are excluded from strata area.



BALCONY SCREEN DESIGN



PLAN



ELEVATION

SECTION

BALCONY SCREEN NOTICE

1. THE BALCONY SHALL NOT BE ENCLOSED UNLESS WITH THE APPROVED BALCONY SCREEN.
2. THE PURCHASER WILL HAVE TO BEAR THE COST OF INSTALLING THE BALCONY SCREEN IF THEY WISH TO, AFTER TAKING OVER THE UNIT.

THE PROPOSED BALCONY SHALL BE POROUS ENOUGH TO ALLOW FOR NATURAL VENTILATION WITHIN THE BALCONY AT ALL TIMES EVEN WHEN THE SCREENS ARE FULLY DRAWN CLOSED. THE PROPOSED BALCONY SCREEN SHALL ALSO BE CAPABLE OF BEING DRAWN OPEN OR RETRACTED FULLY.



ONE TOUCH TO SMARTER LIVING



INSPIRED LIVING



Unlimited privileges
Exclusive deals and promotions.



Keep fit, stay active
Take your pick from Zumba, Yoga, Pilates or Dance classes to lead a healthy lifestyle.



Learn new skills
Learn to swim safely, or pick up tennis from certified and experienced coaches and instructors.

VIRTUAL CONCIERGE



24/7 facility booking
Select and book your desired facility whenever, wherever.



Payment made easy
Pay your maintenance fees through the app.



Hassle-free home help
From house cleaning and choked pipes to air-conditioner maintenance, choose from a curated list of services at your fingertips.

ONE-TOUCH CONVENIENCE



Smart Gateway
The heart of smart living technology.



Your virtual doorman
Unlock your doors remotely.



Pre-cooling arrival
Your home is cooled to the right temperature even before you arrive.

Disclaimer: The content above is subject to terms and conditions. Homeowners will be required to log in via the phone application to access the functions and services listed above. Inspired Living and Virtual Concierge services are subject to change without prior notice and additional charges may apply.

ACCLAIMED DEVELOPERS



Qingjian Realty (South Pacific) Group Pte Ltd ("Qingjian Realty") is the Southeast Asian regional headquarters for Qingjian Group's real estate development arm, which has a presence in China, Singapore, Malaysia, Indonesia, Cambodia and Vietnam.

Qingjian Realty focuses on property development in the residential, commercial, and industrial sectors in Singapore. It has consistently received the BCI Asia Top Ten Developers Award since 2015, among other top honours.

With its belief of Listening, Innovating, Growing with the people it serves, it has built a diverse portfolio of properties including mixed-use development Le Quest and private condominium JadeScape.



Perennial Real Estate Holdings Limited ("Perennial") is an integrated real estate and healthcare company that focuses on large-scale mixed-use developments.

One of Perennial's landmark residential projects is the exclusive Eden Residences within Capitol Singapore, an integrated development which also comprises the luxurious The Capitol Kempinski Hotel Singapore. Eden Residences is strategically located in Singapore's Civic District and boasts remarkable views of the Marina Bay area and beyond.

Other upcoming residential projects include those within Beijing Tongzhou Integrated Development and Xi'an North High Speed Railway Integrated Development in China, The Light City in Penang, Malaysia, and Sentul City, Greater Jakarta, Indonesia.

Qingjian Perennial (Bukit Timah) Pte. Ltd. (ROC:201811396K) · Developer's Licence No.: C1351 · Encumbrances: Mortgage No. IF/724522U in favour of United Overseas Bank Limited · Lot/Mukim No.: Lot 04278P MK 05 at Toh Tuck Road · Tenure of Land: Estate in perpetuity · Expected Date of Vacant Possession: 6 Sep 2024 · Expected Date of Legal Completion: 6 Sep 2027

www.forettatbukitimah.com.sg 6846 7778 | Facebook: @ForettSGOfficial | Instagram: @ForettSGOfficial

While every reasonable care has been taken in preparing this brochure, specifications, constructing the sales models and sales gallery/showflat (the "Materials"), the Developer and its agents and their respective servants and contractors do not warrant the accuracy of any of the Materials and shall in no way be held responsible for any inaccuracies in their contents or between the Materials and the actual unit when built. The Developer shall not be bound by any statement, representation or promise (written or oral) by its agents and contractors. All statements and depictions are believed to be correct but are not to be regarded as statements or representations of fact. The Sale and Purchase Agreement shall form the entire agreement between the Developer and the Purchaser and shall supersede all statements, representations or promises made prior to signing of the Sale and Purchase Agreement. All information, specifications, layout plans, building plans, location of facilities, finishes and appliance selection and visuals are subject to any changes as may be required and approved by the Architect, Developer and/or by the relevant authority and may be changed without notice. The Materials are not intended to be contractual documents and shall not form part of any offer or contract. Visuals, renderings, illustrations, models, showflat displays and photography are artist's impressions only and none can be regarded as representation of fact. Floor areas are approximate measurements only and not to scale. It is subject to final survey. The property is subject to inspection by the relevant authorities to comply with current codes of practice.

All information, specifications, rendering, visual representations and plans are current at the time of publication and are subject to change as may be required by us and/or the competent authorities, and shall not form part of any offer or contract nor constitute any warranty by us and shall not be regarded as statements of representations of fact. All plans are subject to amendments as direct and/or approved by the building authorities. The Sale and Purchase Agreement shall form the entire agreement between us as the Developer and the Purchaser, and shall supersede all statements, representations or promises made prior to the signing of the Sale and Purchase Agreement and shall in no way be modified by any statements, representations or promises made by us or the Marketing Agent(s).

